

Crap & Win!
iPad Pro

Check out our contest!
suzuka.com.my/promotion | T&C Apply



ARCHISTRA



EDITION
2.2

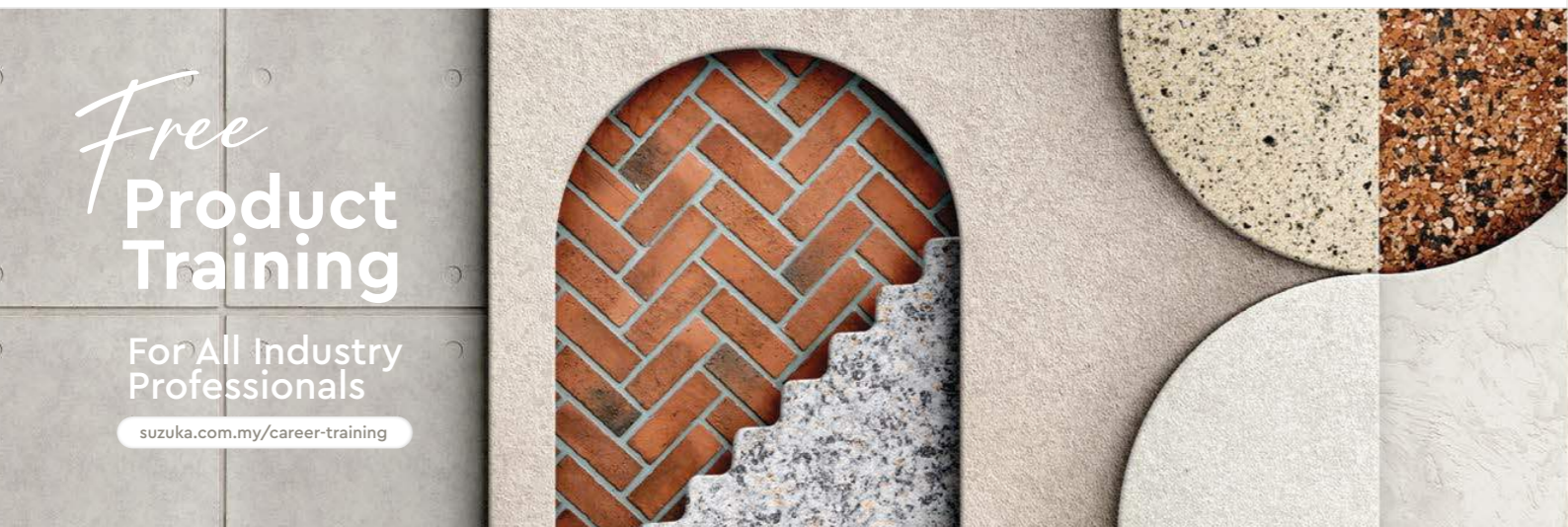
WALL PANEL SERIES

- Complies to LEED, U.S. Green Building Council Standards.
- Fire Retardant: Fire Rating B1, DIN Standards.



WALL FINISH PROFESSIONALS.

SINCE 1977



Free
Product Training

For All Industry Professionals

suzuka.com.my/career-training

WALL FINISH PROFESSIONALS



suzuka.com.my

[Instagram](https://www.instagram.com/suzuka.group) [Facebook](https://www.facebook.com/suzuka.group) [YouTube](https://www.youtube.com/suzuka.group) | Hotline : +6012-258 7388

Photos of the products shown may vary in color due to lighting condition & printing. We suggest you examine actual product samples before ordering.



ARCHISTRA-E2.2-2412

ARCHISTRA



Redefine your walls with the Archistra wall panel collection.

Transform your space with our exquisite Archistra wall panel collection. Crafted using polyurethane, with precision and artistic flair, these panels redefine design, seamlessly blending artistry & architecture.

Choose from a diverse range of patterns, textures, and colors to suit your aesthetic preferences. Whether you seek a contemporary focal point or a timeless elegance, Archistra offers a versatile solution.

Ultra lightweight, hassle free installation and maintenance, these panels effortlessly adds a touch of sophistication and personality to your living spaces.



Features

- Ultra Lightweight
- Water Resistant
- Finished with Green Coating
- Paintable
- Anti-mould
- Anti-termite
- Fire Retardant: Fire Rating B1, DIN Standards.
- Easy Installation & DIY Friendly
- Can Be Paired with other Suzuka Coatings.
- Made in Malaysia
- Complies to **LEED**, U.S. Green Building Council Standards.

ACH-11

series



Coverage (Per box) | Pieces (Per box)
4.32 sqm | **6 pcs**

Max. Weight (ACH-1101 - 1105)
1.4 kg (Per Piece) | **10.0 kg** (Per box)

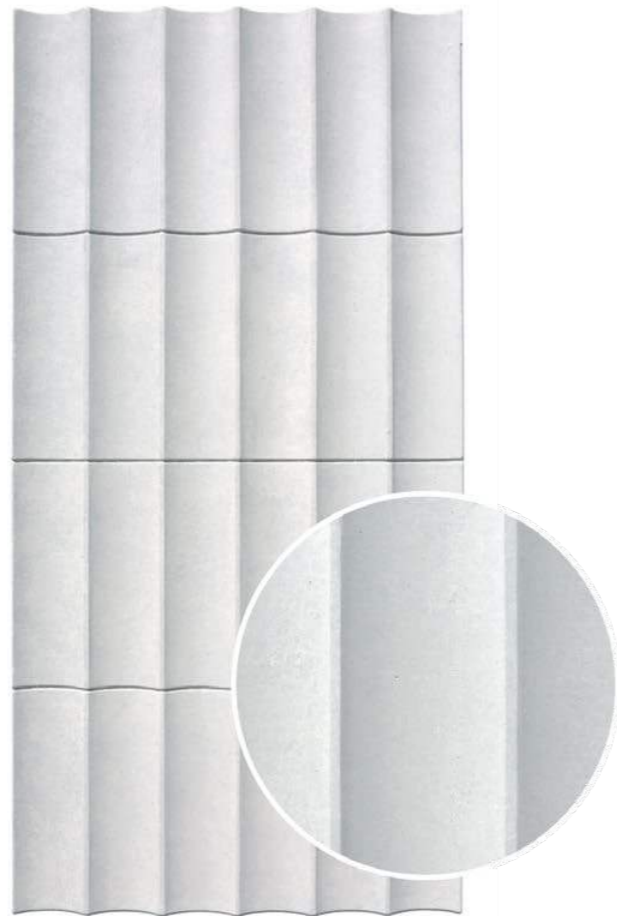
Max. Weight (ACH-1151-1153)
2.2 kg (Per Piece) | **15.0 kg** (Per box)

* Please allow a \pm 5% tolerance for product size, weight and colour.

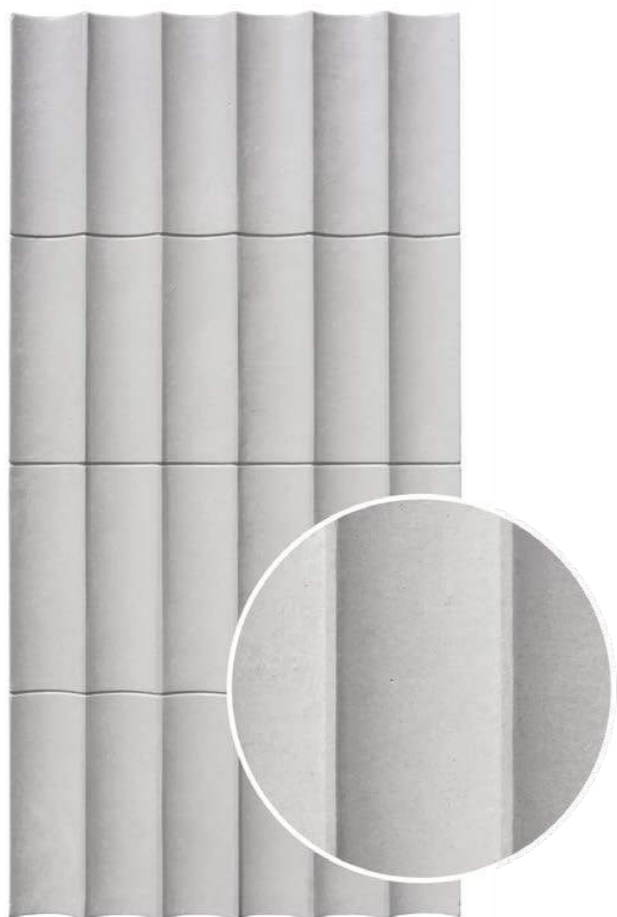




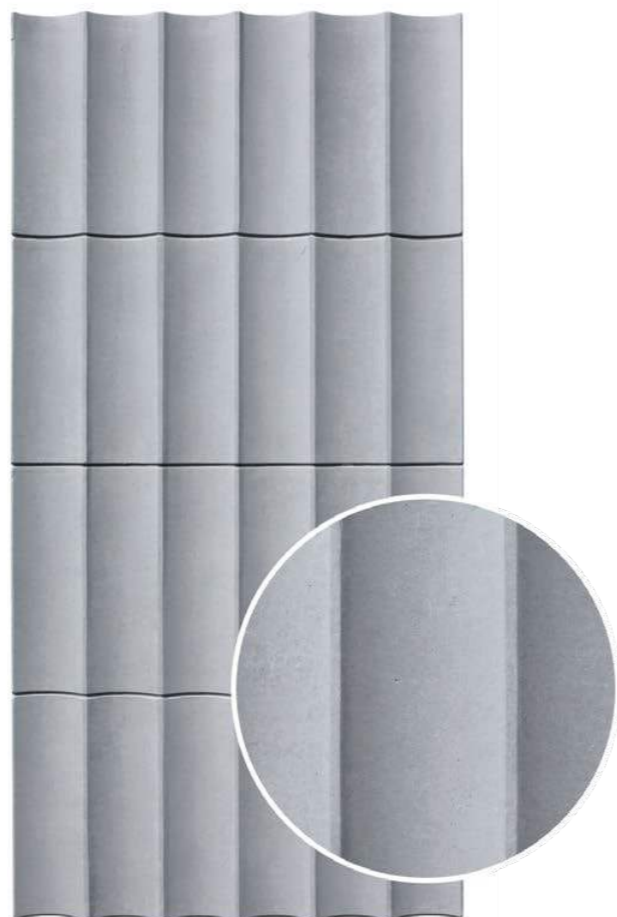
ACH-1101



ACH-1102



ACH-1103



ACH-1104



ACH-1101



ACH-1104

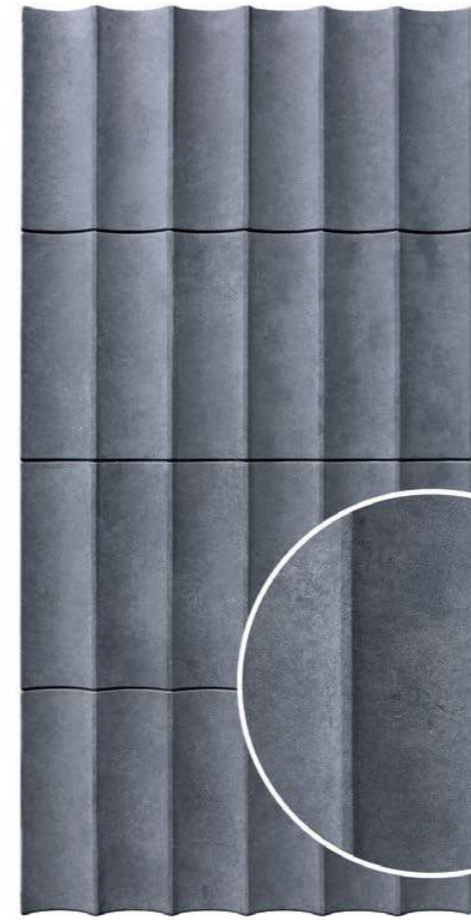


ACH-1103

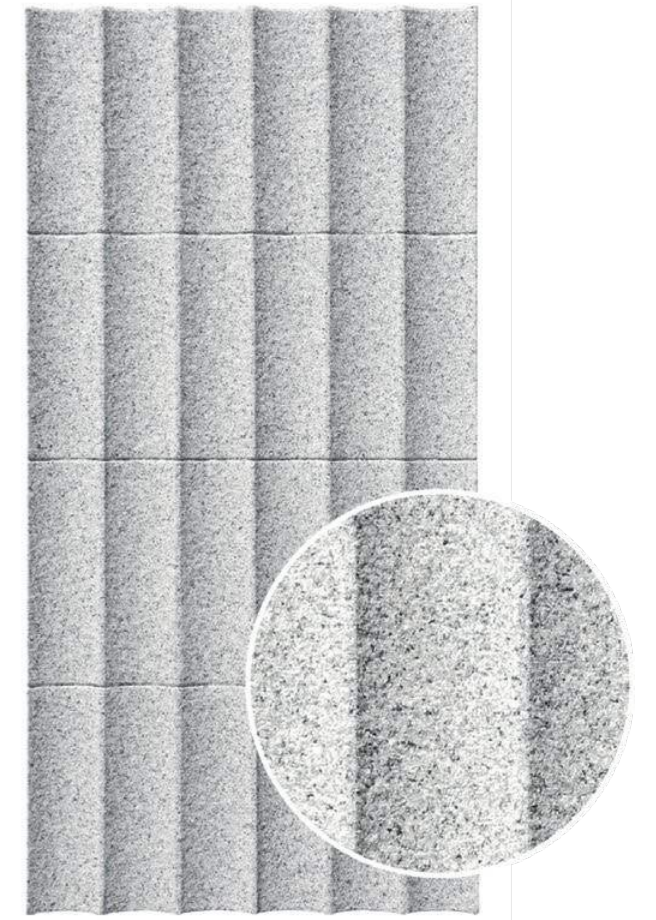




Combination of ACH-1101 & ACH-1102



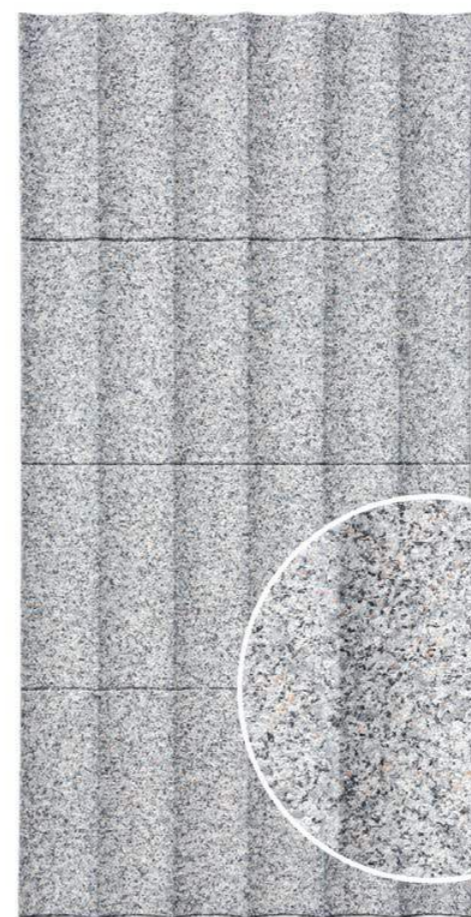
ACH-1105



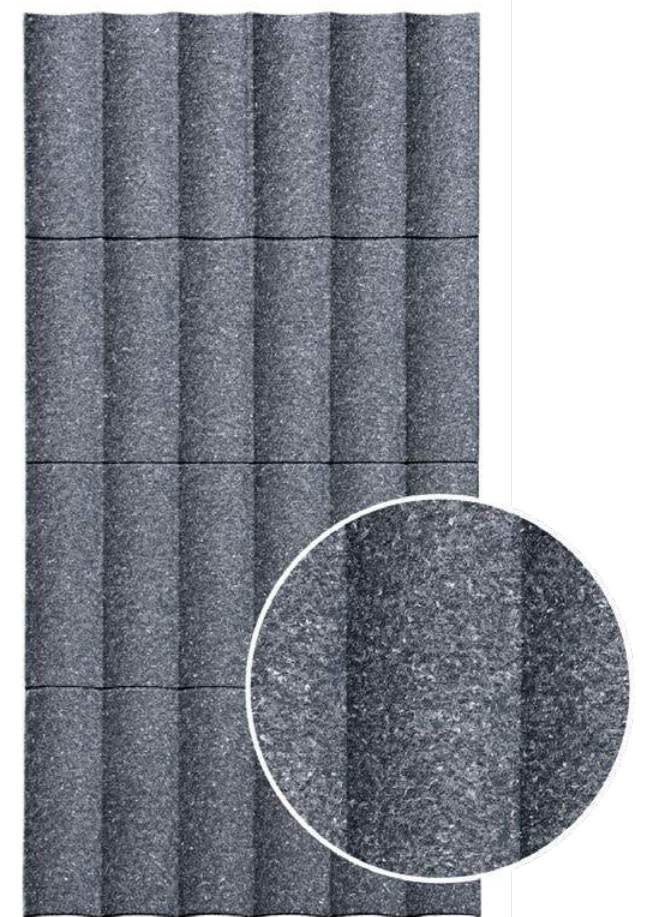
ACH-1151



ACH-1105



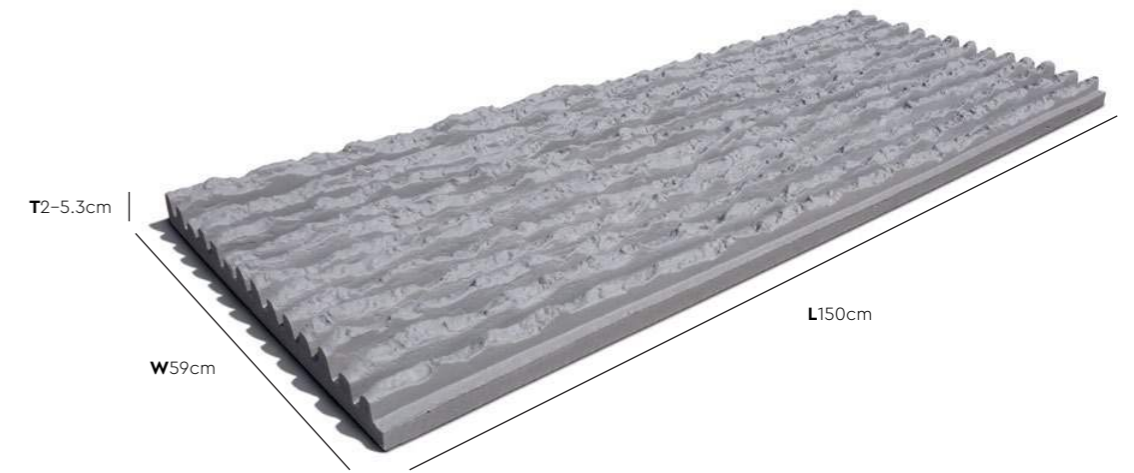
ACH-1152



ACH-1153

ACH-60

series



Coverage (Per box) | Pieces (Per box)
3.54 sqm | **4 pcs**

Max. Weight
3.1 kg (Per Piece) | **15 kg** (Per box)

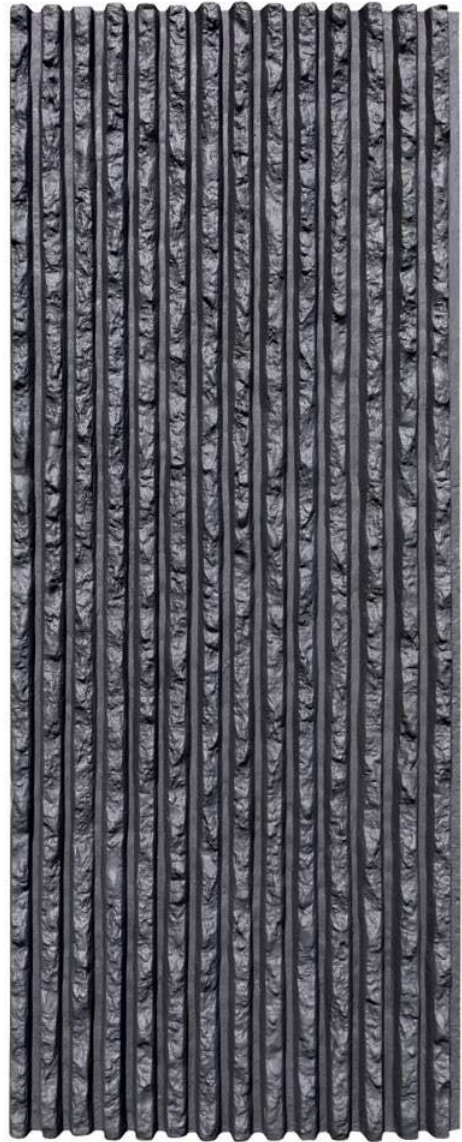
* Please allow a \pm 5% tolerance for product size, weight and colour.



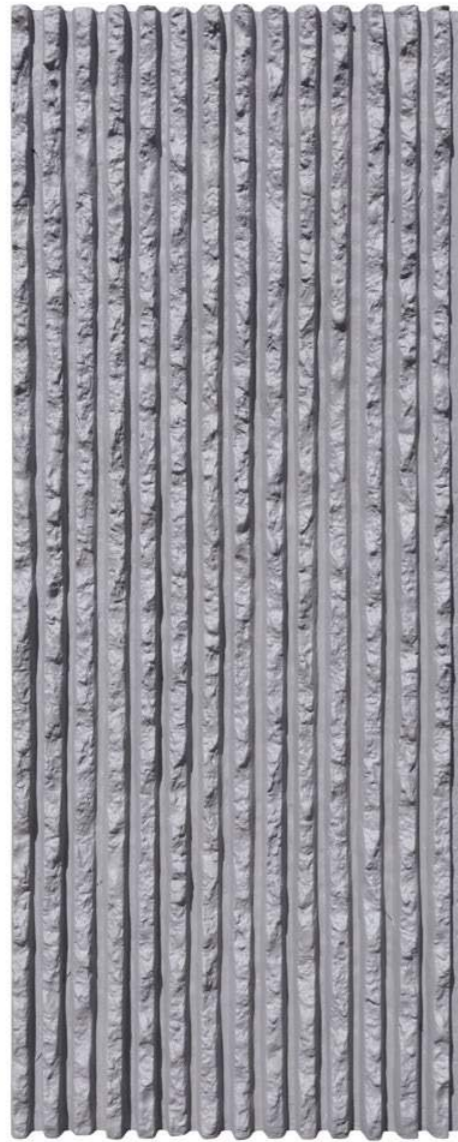
ACH-6003



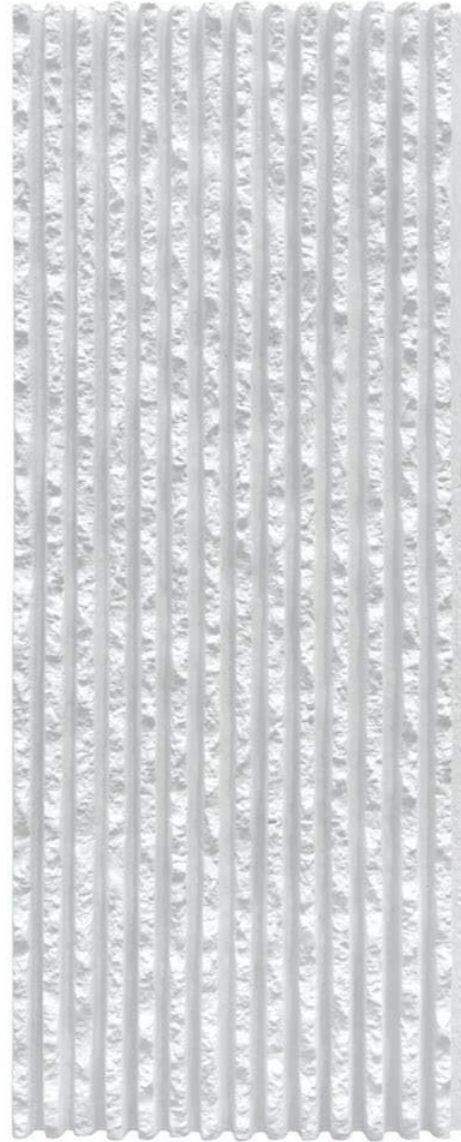
ACH-6006



ACH-6001



ACH-6002



ACH-6003



ACH-6004



ACH-6005



ACH-6006

ACH-50

series



Coverage (Per box) | Pieces (Per box)
2.88 sqm | **4 pcs**

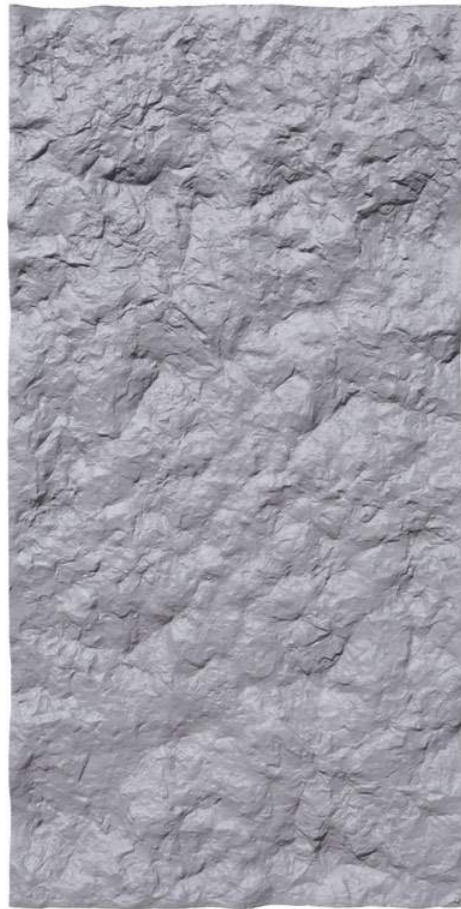
Max. Weight
2.4 kg (Per Piece) | **11 kg** (Per box)

* Please allow a $\pm 5\%$ tolerance for product size, weight and colour.





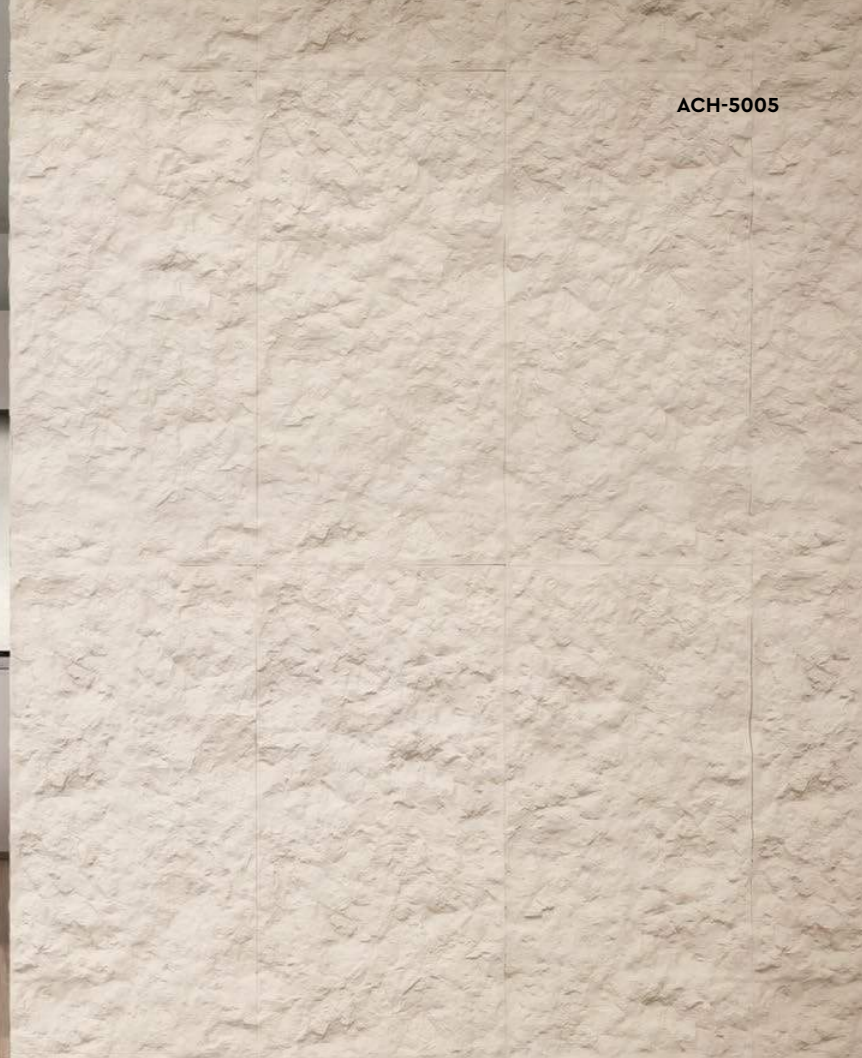
ACH-5001



ACH-5002



ACH-5003



ACH-5005



ACH-5004



ACH-5005



ACH-5006



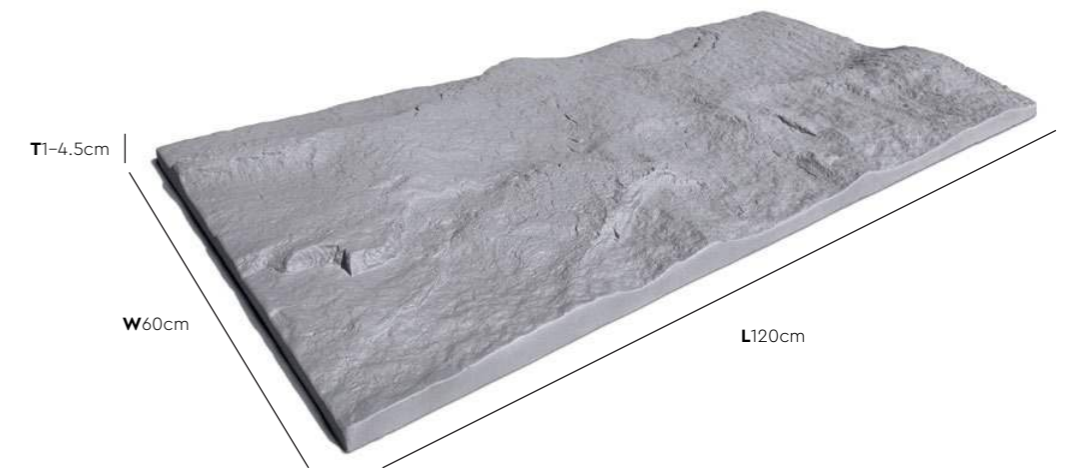
ACH-5003



ACH-5006

ACH-10

series



ACH-1004 | Stacks



ACH-1005 | Stacks

Coverage (Per box) | Pieces (Per box)
2.88 sqm | **4 pcs**

Max. Weight (ACH-1001 - 1006)
2.2 kg (Per Piece) | **11.5 kg** (Per box)

Max. Weight (ACH-1051)
3.3 kg (Per Piece) | **13.3 kg** (Per box)

* Please allow a \pm 5% tolerance for product size, weight and colour.



ACH-1001



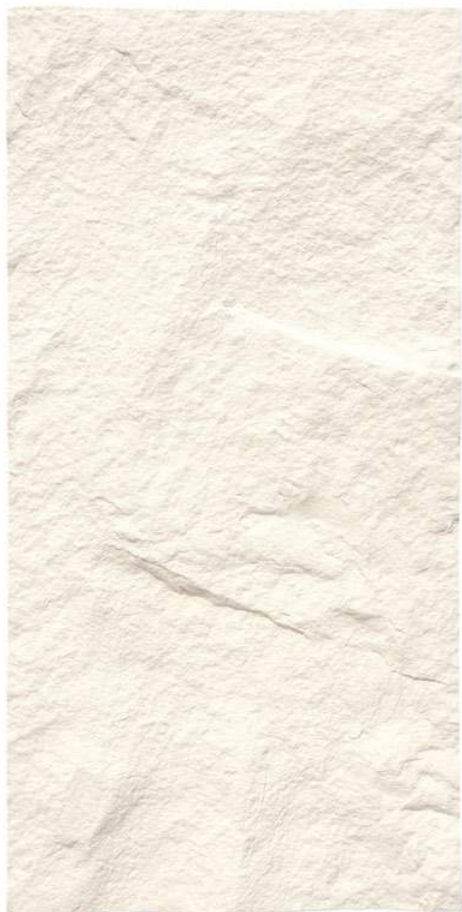
ACH-1002



ACH-1003



ACH-1003 | Running Bond



ACH-1004



ACH-1005



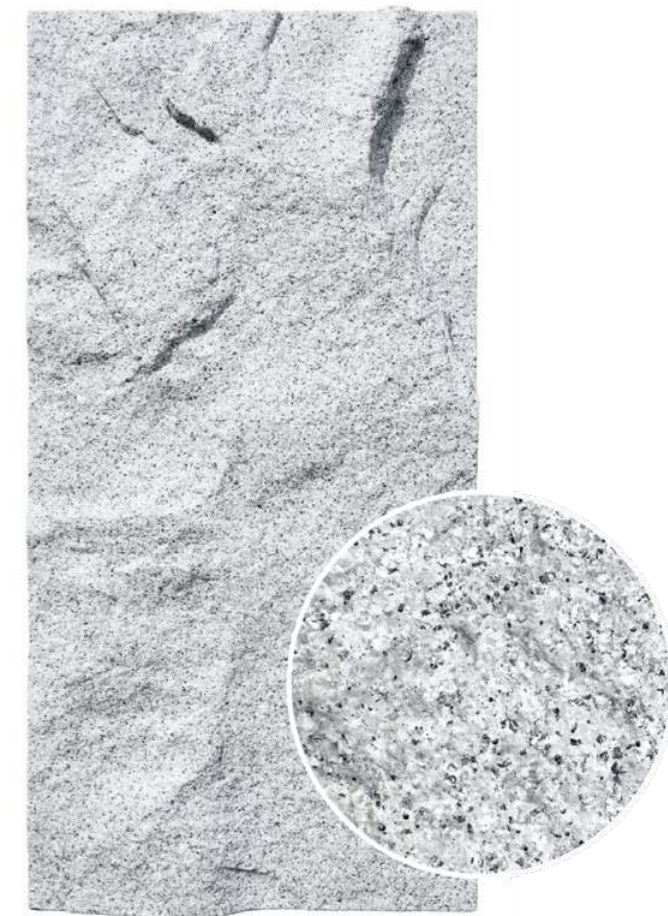
ACH-1006



ACH-1002 | Random



ACH-1005 | Running Bond



ACH-1051



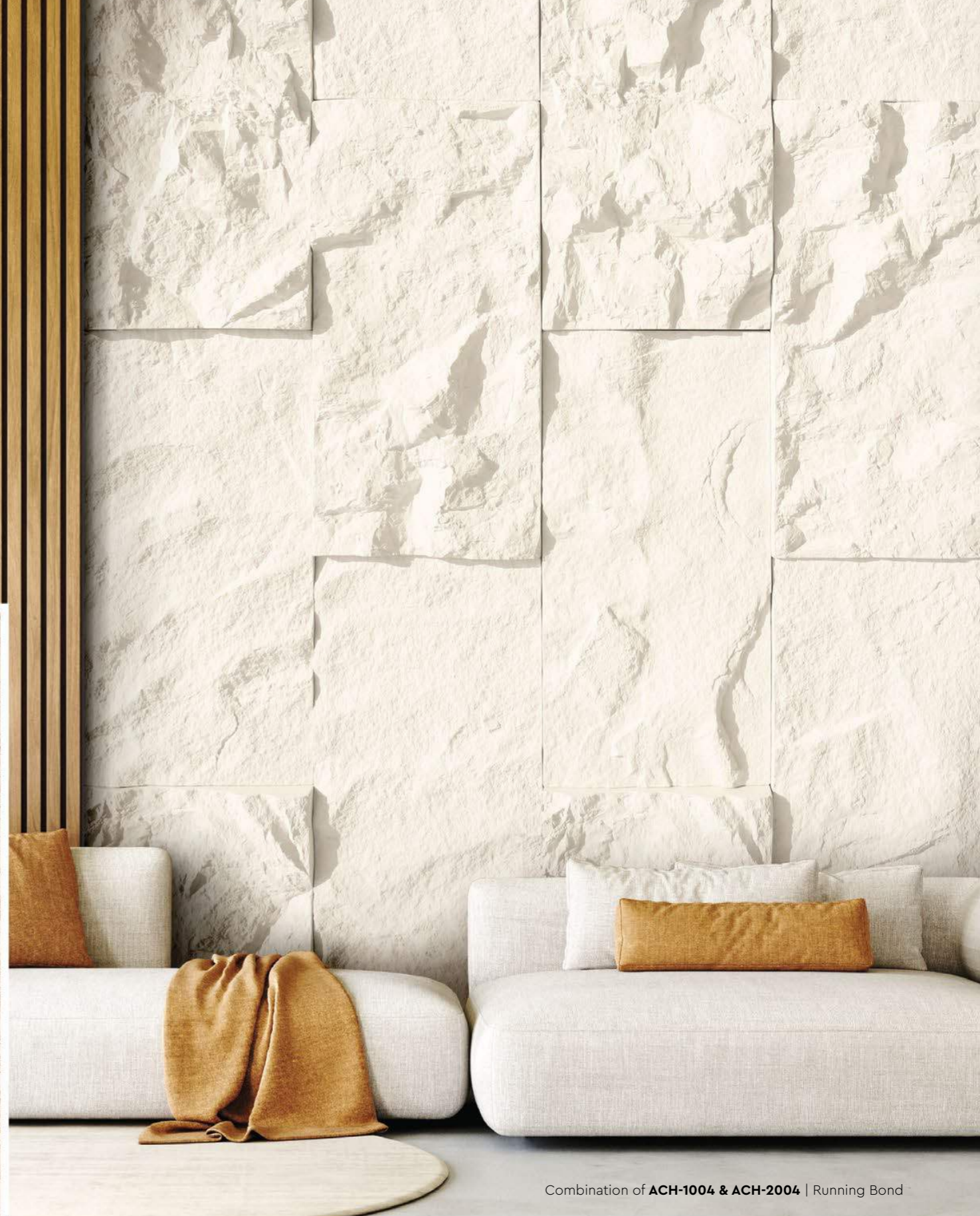
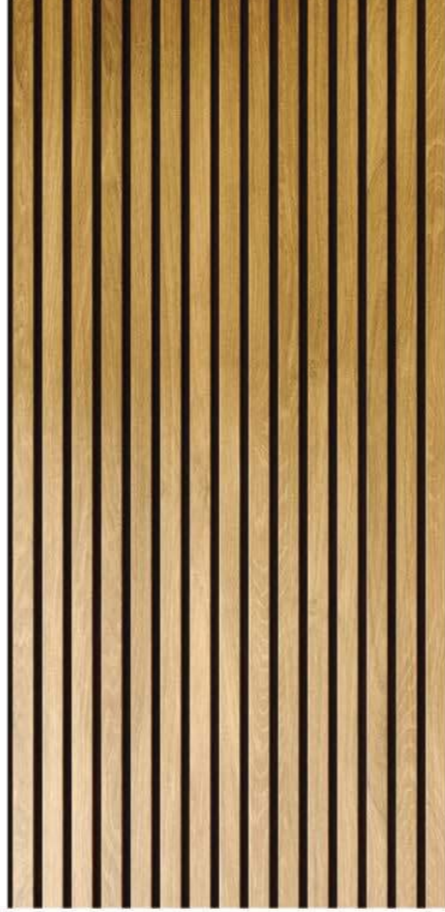
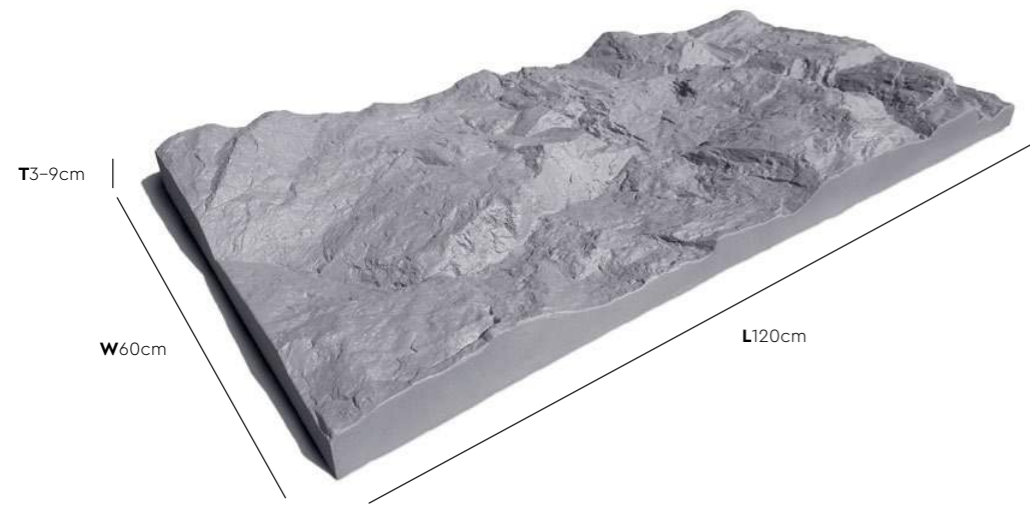
ACH-1004 | Stacks



ACH-1001 | Running Bond

ACH-20

series



Coverage (Per box) | Pieces (Per box)
2.16 sqm | **3 pcs**

Max. Weight (ACH-2001 - 2006)
2.8 kg (Per Piece) | **11.5 kg** (Per box)

Max. Weight (ACH-2051)
3.9 kg (Per Piece) | **11.8 kg** (Per box)

* Please allow a ± 5% tolerance for product size, weight and colour.



ACH-2006 | Stacks

Combination of **ACH-1004 & ACH-2004** | Running Bond



ACH-2001



ACH-2002



ACH-2003



ACH-2005 | Running Bond



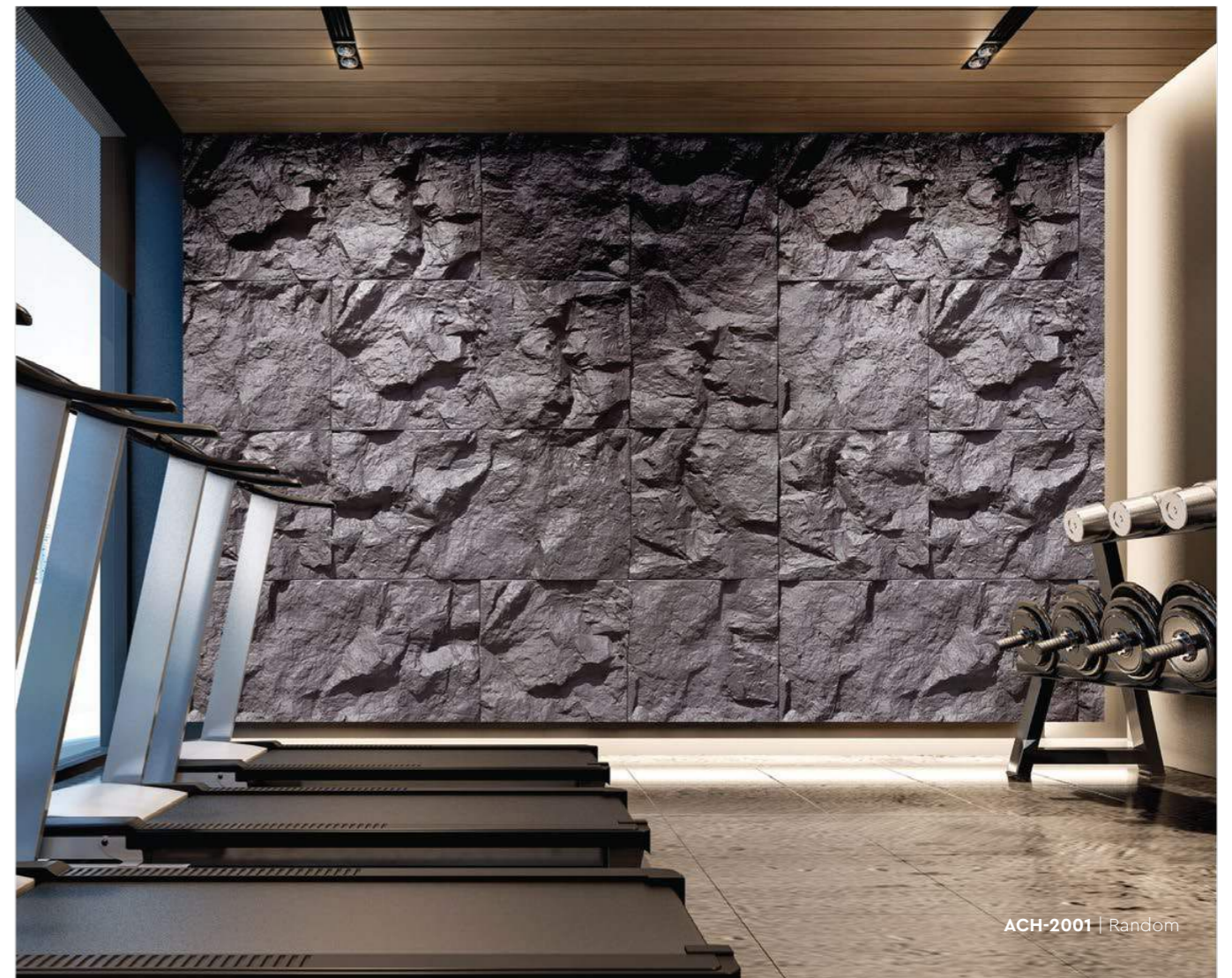
ACH-2004



ACH-2005



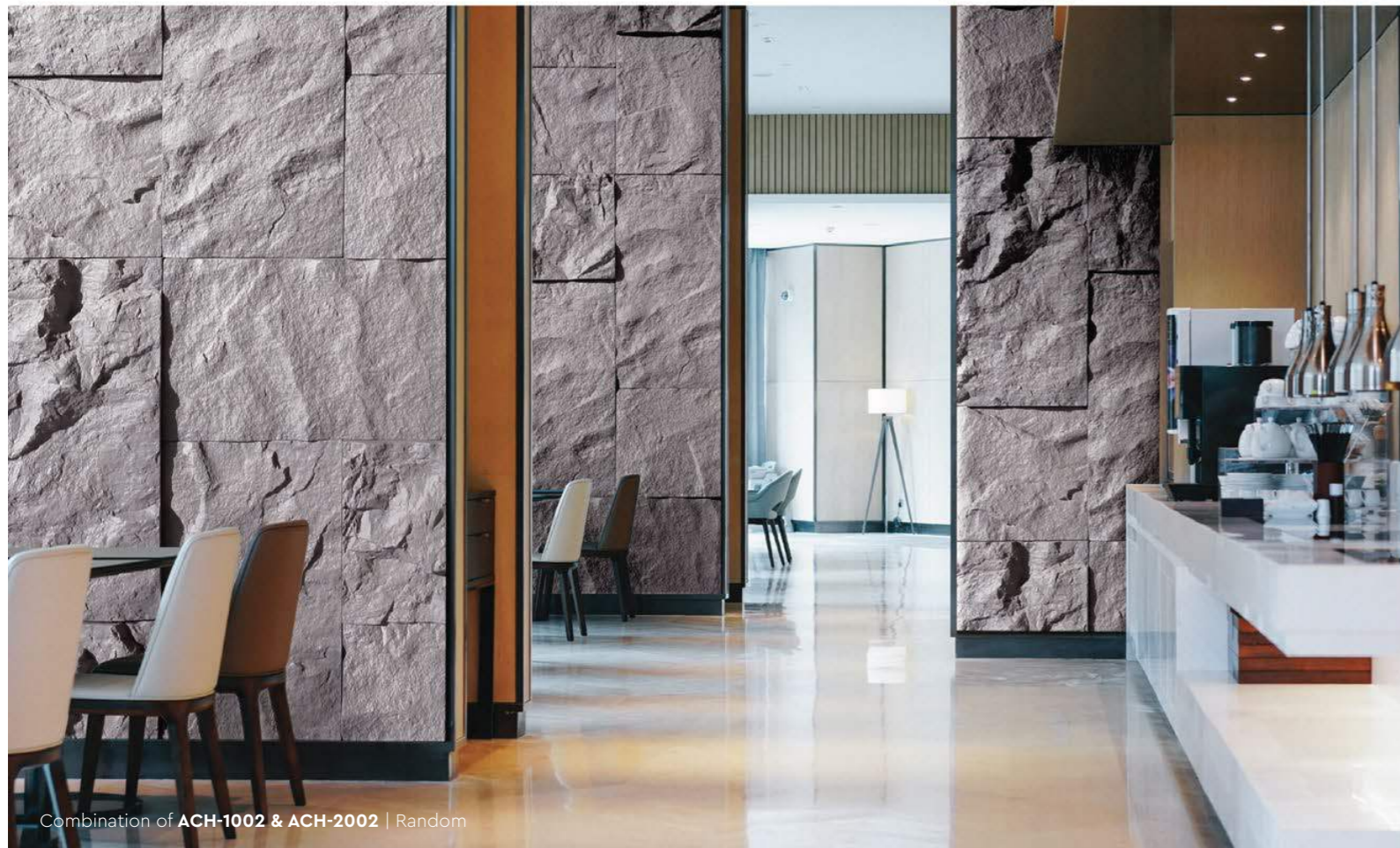
ACH-2006



ACH-2001 | Random



ACH-2051



Combination of ACH-1002 & ACH-2002 | Random



ACH-2003 | Random

ACH-40

series



Coverage (Per box) | Pieces (Per box)
2.88 sqm | **4 pcs**

Max. Weight (ACH-4001 - 4006)
2.0 kg (Per Piece) | **11.5 kg** (Per box)

Max. Weight (ACH-4051)
3.1 kg (Per Piece) | **13.0 kg** (Per box)

* Please allow a \pm 5% tolerance for product size, weight and colour.



ACH-4001



ACH-4002



ACH-4003



ACH-4005 | Random



ACH-4004



ACH-4005



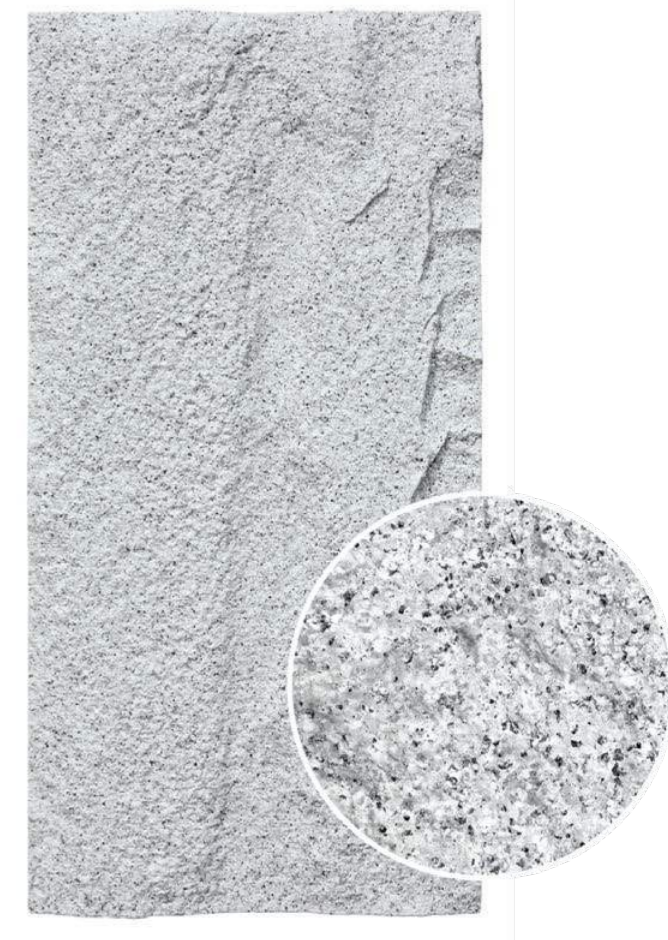
ACH-4006



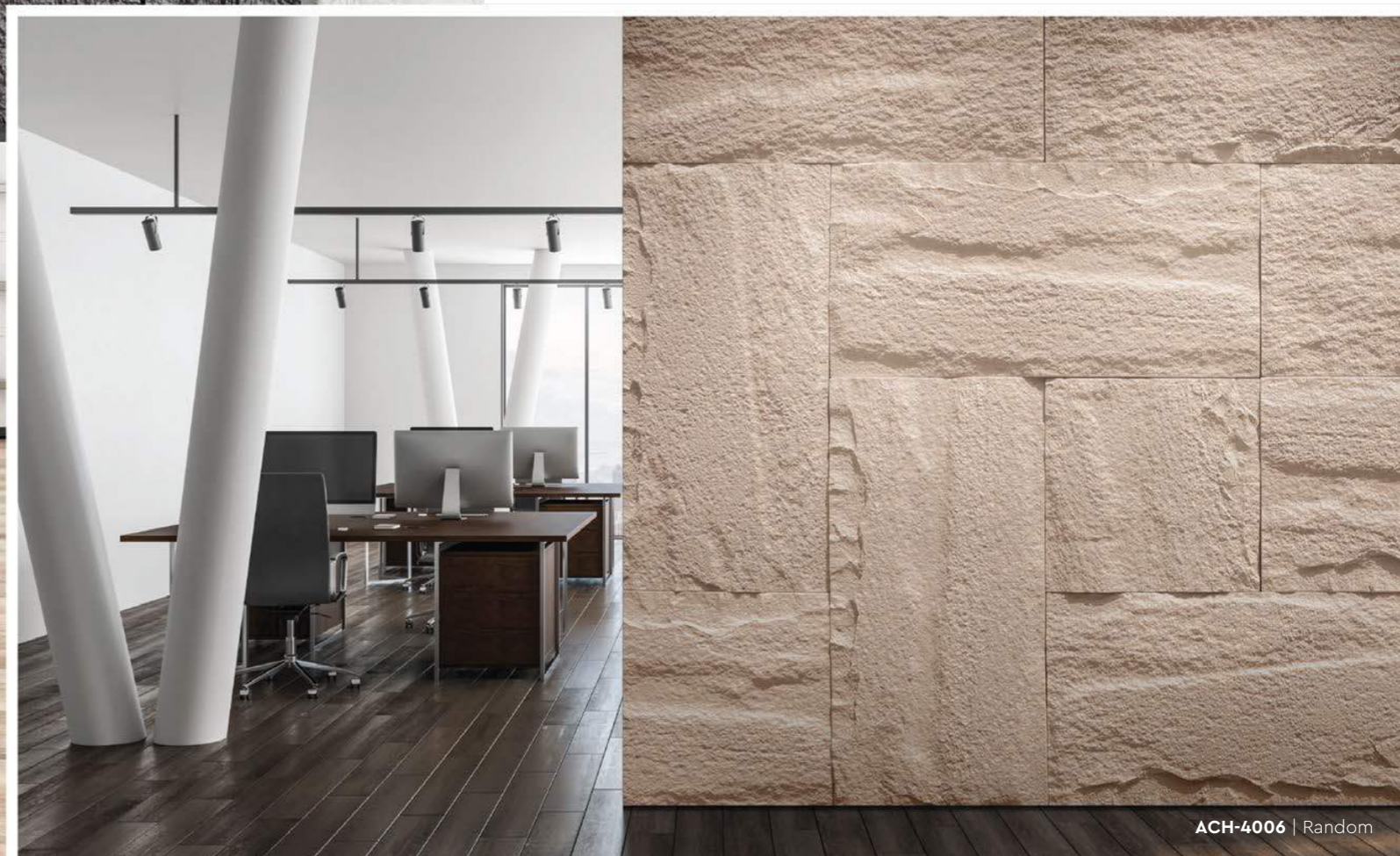
ACH-4003 | Stacks



Combination of ACH-1001 & ACH-4001 | Random



ACH-4051



ACH-4006 | Random



Running Bond



Stacks



Random

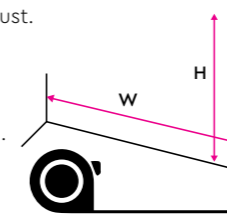


Installation Instructions

Step 1 – Surface Preparation

A Clean up the surface from dirt or dust.

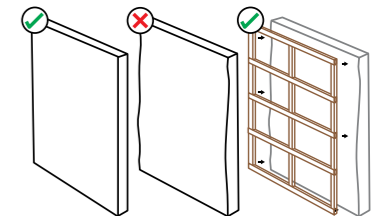
If the scheme coat of the wall is weak, chalking or peeling, we recommend to use the **Wall Sealer Pro** (Page 26).



B Measure the dimensions of wall.

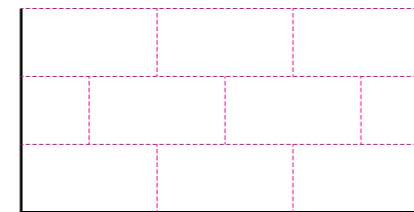
C Ensure your wall surface is non-wavy, dry, and solid.

If your surface is too wavy for the panels to be applied in flatly, a wooden frame can be built as a backing for the panels.

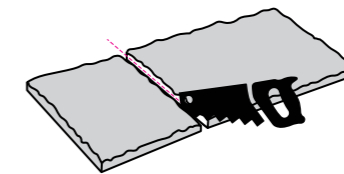


Step 2 – Layout Planning

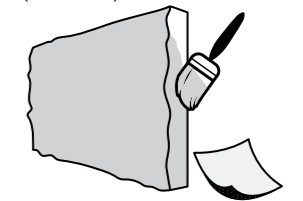
A Plan the panel layout.



B Some panels may need to be trimmed to fit your wall dimensions.



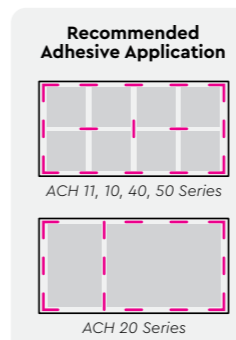
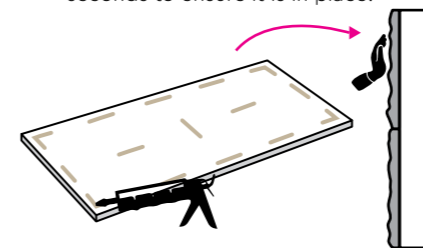
C Sand the trimmed part with sand paper and touch up with Archistra paint (Included).



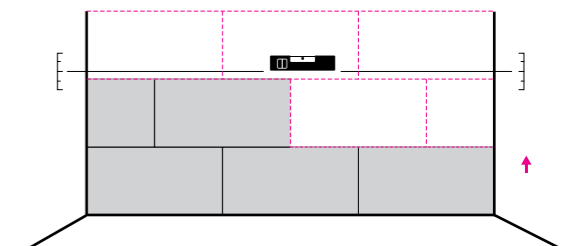
⚠ Ensure the whole part is coated & fully dried.

Step 3 – Panel Application

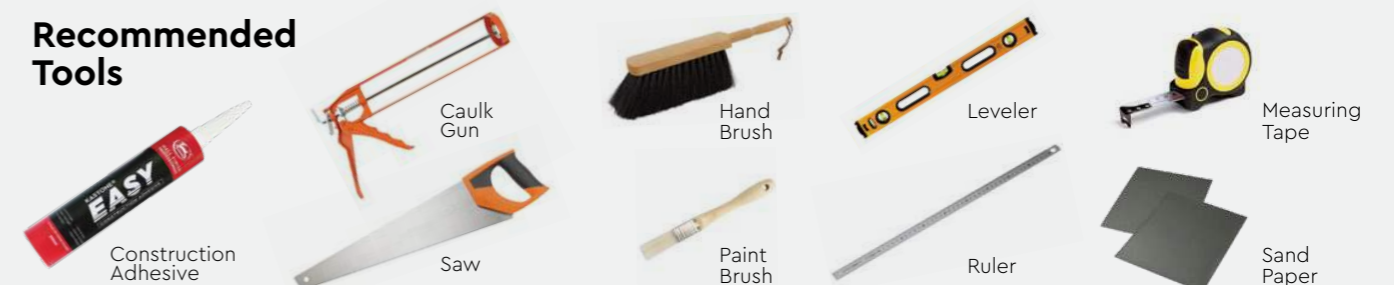
A Apply **construction adhesive** on the back of the panel and stick to the wall. Press and hold the panel a few seconds to ensure it is in place.

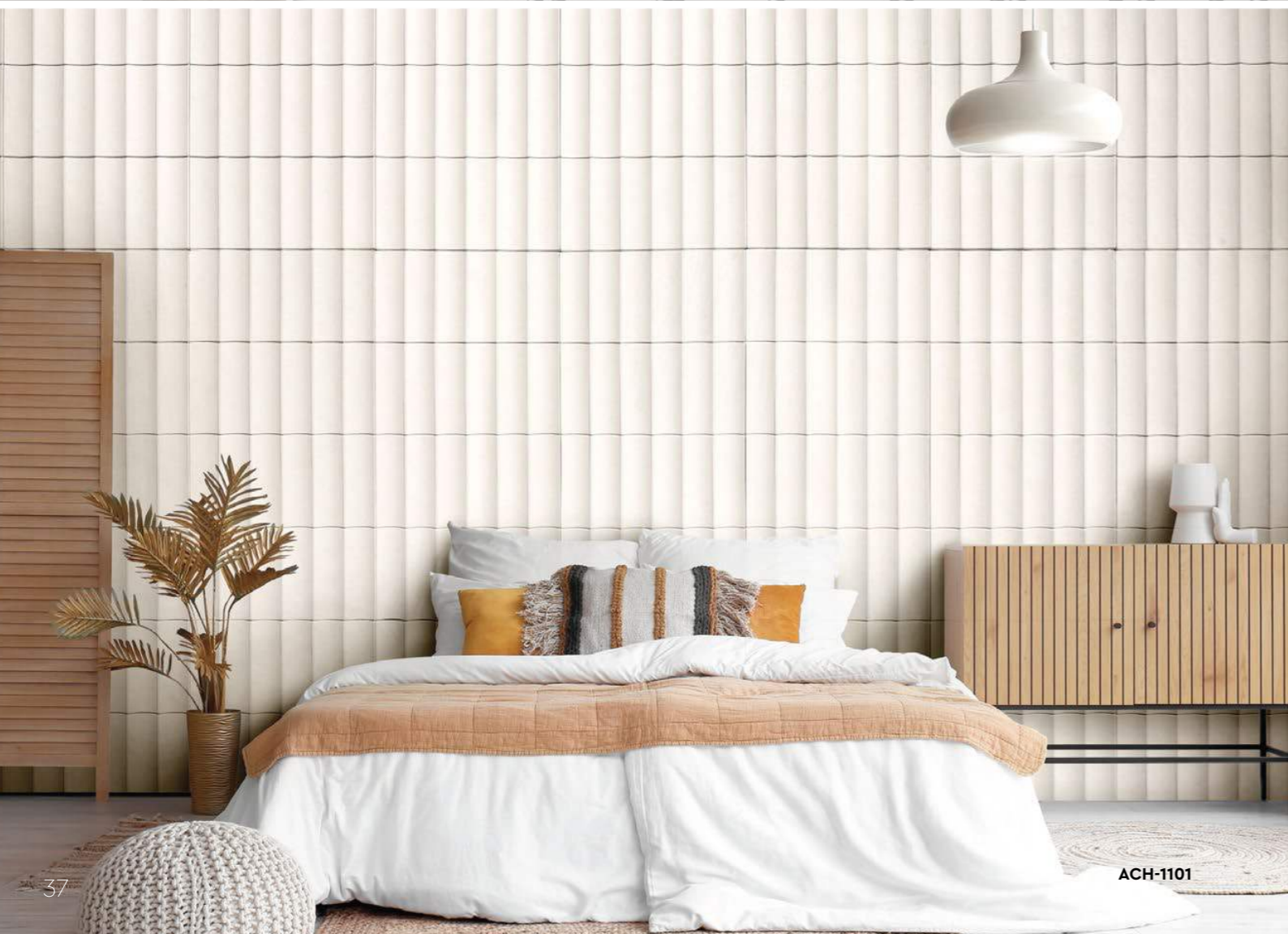


B Install the panels working from the bottom upwards. The use of a leveler is recommended.



Recommended Tools





ACH-1101

TECHNICAL SPECIFICATIONS

Series	ACH-11	ACH-60	ACH-50
Dimension (cm)	L120 x W60 x T1-2.5	L150 x W59 x T2-5.3	L120 x W60 x T1.5-4.8
Coverage Per Box (sqm)	4.32	3.54	2.88
Pieces Per Box	6	4	4
Weight (kg)			
kg/piece (ECES) - (01 - 05)	1.4	-	-
kg/piece (SGC) - (51 - 53)	2.2	-	-
Max. kg/box (ECES) - (01 - 05)	10.0	-	-
Max. kg/box (SGC) - (51 - 53)	15.0	-	-
kg/piece (SP) - (01 - 06)	-	3.1	2.4
Max. kg/box (SP) - (01 - 06)	-	15	11

Series	ACH-10	ACH-20	ACH-40
Dimension (cm)	L120 x W60 x T1-4.5	L120 x W60 x T3-9	L120 x W60 x T1-3
Coverage Per Box (sqm)	2.88	2.16	2.88
Pieces Per Box	4	3	4
Weight (kg)			
kg/piece (SP) - (01 - 06)	2.2	2.8	2.0
kg/piece (SGC) - (51)	3.3	3.9	3.1
Max. kg/box (SP) - (01 - 06)	11.5	11.5	11.5
Max. kg/box (SGC) - (51)	13.3	11.8	13.0

- * Data of weight presented is the maximum weight for every piece & box respectively.
- * Please allow a ± 5% tolerance for panel size, weight and colour.
- * Product may vary in colour due to lighting conditions and printing. We suggest you examine product samples before ordering.

SUZUKA®
WALL SEALER PRO

“ Make your wall finishes last longer! ”

Superior primer for concrete, skimmed or masonry surfaces.

This sealer that has good substrate penetration abilities to increase adhesion of product to prevent chalking or peeling off. It has excellent alkaline resistance properties that can prevent efflorescence. It is an ideal base coat for any SUZUKA® or any wall finish products.

Packing Size:

1L **5L** **20L**

Coverage

6.5 - 8.5
m²/l/coat

Drying Time (hour)

Surface Dry : **1** | Hard Dry : **5** | Recoating : **5**

Substrate Temperature: **23°C - 26°C**

Suitable for:

- Masonry wall
- Brickwork
- Plaster
- Skimmed Coat
- Asbestos free substrate

Features:

- Excellent alkaline resistance to prevent efflorescence.
- Good for new walls and repainting.
- Prevents skim coat from chalking & peeling off.
- Extremely good penetration.
- Excellent adhesion.
- Exterior and interior use.
- Applicable with brush, roller or spray gun.

Airless
Spray

Nozzle
1.8 - 2.0 mm

Spray Angle Degree
65° - 80°

Pressure
210 psi/150kg/cm²