

*Crap & Win!*  
**iPad Pro**

Check out our contest!  
suzuka.com.my/promotion | T&C Apply



# SUZUKA® **GRANI** MULTICOLOR

EDITION  
**03**

**WALL FINISH PROFESSIONALS**

TAIWAN • MALAYSIA • THAILAND



BRICK & STONE VENEER • TEXTURED PAINT • KASTPANEL • ECES • TEXTURE COATING • PEBBLE STONE COATING



**suzuka.com.my**

**suzuka.group** | **Hotline : +6012-258 7388**

\* Photos of the products shown in this catalogue may vary in color due to lighting condition & printing. We suggest you examine actual product samples before ordering.



SGM-E3-2404

WALL FINISH  
PROFESSIONALS.

SINCE  
1977

**GRANITE  
EFFECT COATING**

FOR THE EXTERIOR & INTERIOR

# SUZUKA® GRANI MULTICOLOR

GRANITE EFFECT COATING

1 **SGC**  
**GRANILYTE**  
Page 3 - 8

2 **SGM**  
**GRANITTO**  
Page 9 - 22



**SUZUKA®**  
**WALL SEALER PRO**

“ Make your wall finishes last longer! ”

Packing Size: **1L** **5L** **20L**

## Superior primer for concrete, skimmed or masonry surfaces.

This sealer that has good substrate penetration abilities to increase adhesion of product to prevent chalking or peeling off.

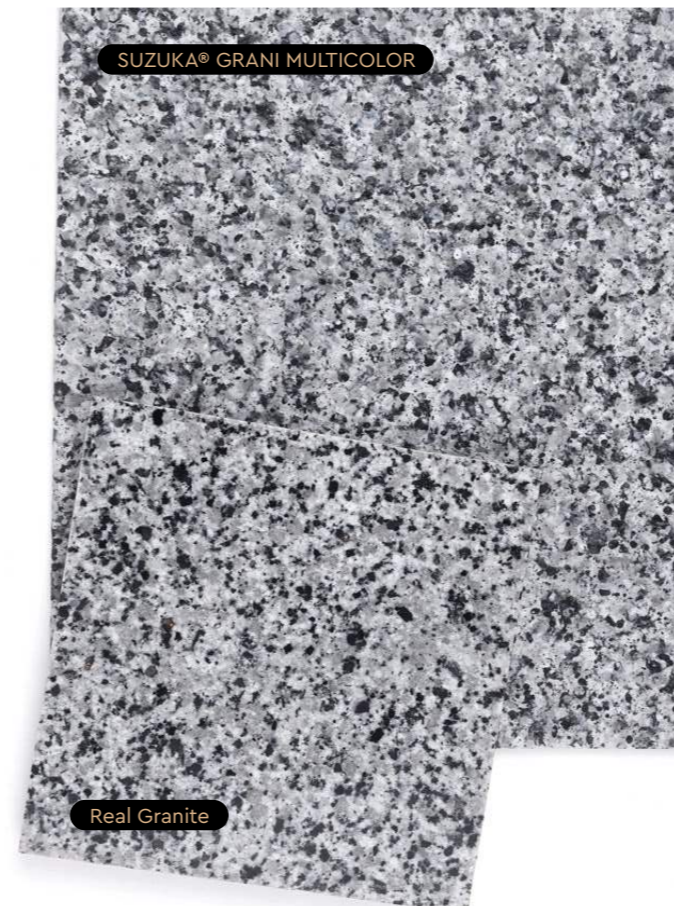
It has excellent alkaline resistance properties that can prevent efflorescence. It is an ideal base coat for any SUZUKA® or any wall finish products.

## SUZUKA® Grani Multicolor vs. Real Granite

Factors	Suzuka Grani Multicolor (SGC & SGM)	Real Granite
Installation Time	Quick	Slow
Installation Ease	Simple	Difficult & requires extensive set-up
Installation Cost	Economical	Expensive
Material Cost	Economical	Expensive
Colour Control	Yes	No
Environmental-Friendliness	Non-invasive & water-based	Environmentally invasive
Safety	No risk	Risk of loosened stones falling
Customization	Yes	No
Maintenance	Economical and simple	Requires replacement & colour matching

### Advantages

- One-time, multi-colour spray system
- Colours and patterns can be customized
- Resistant to stains, fungus, algae, acid and alkali
- Washable and easy to maintain
- High adhesion and anti-peeling/flaking
- Superb elasticity and is crack resistant
- Water-based and eco-friendly
- Excellent durability against weather conditions



Coverage	Drying Time (hour)	
<b>6.5 - 8.5</b> m <sup>2</sup> /l/coat	Surface Dry : <b>1</b>	Substrate Temperature: <b>23°C - 26°C</b>
	Hard Dry : <b>5</b>	
	Recoating : <b>5</b>	

### Features:

- Excellent alkaline resistance to prevent efflorescence.
- Good for new walls and repainting.
- Prevents skim coat from chalking & peeling off.
- Extremely good penetration.
- Excellent adhesion.
- Exterior and interior use.
- Applicable with brush, roller or spray gun.

### Suitable for:

- Masonry wall
- Brickwork
- Plaster
- Skimmed Coat
- Asbestos free substrate

Airless Spray		
Nozzle	Spray Angle Degree	Pressure
<b>1.8 - 2.0 mm</b>	<b>65° - 80°</b>	<b>210 psi/150kg/cm<sup>2</sup></b>

# SUZUKA® GRANILYTE

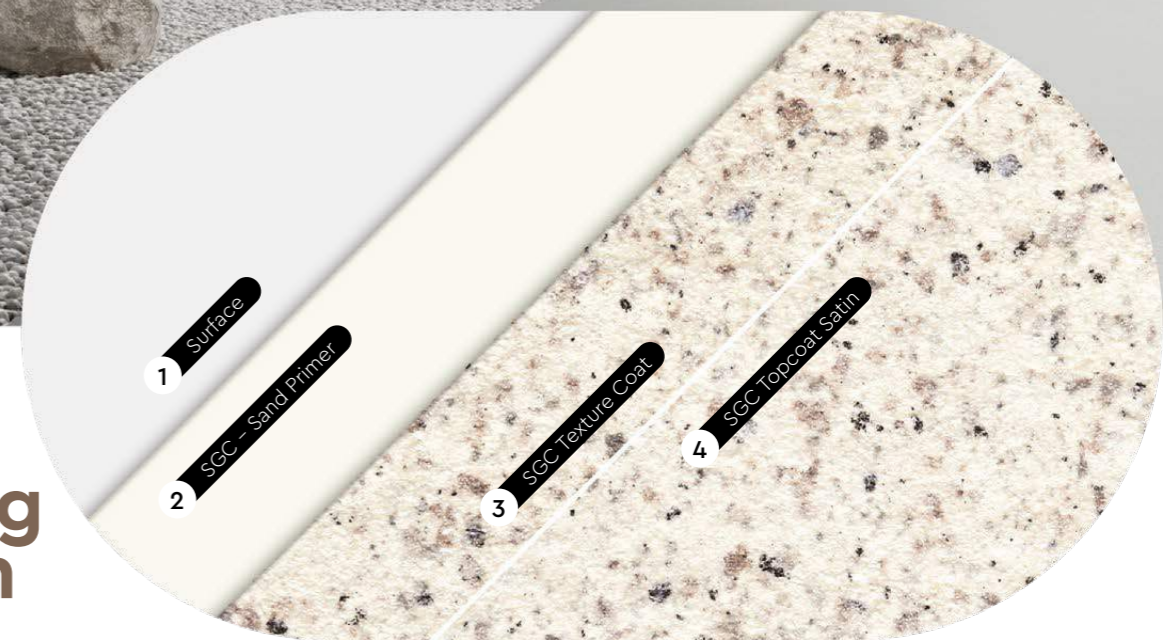
GRANITE EFFECT COATING



Introducing Granilyte, crafted to bring the timeless elegance and durability of natural granite look to your walls with ease. The meticulously formulated coating replicates the intricate natural beauty of granite.



## SGC Coating System

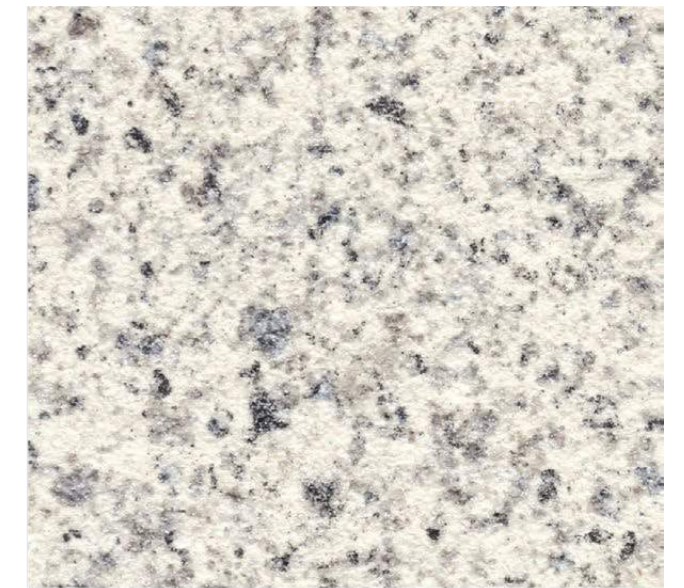


## SGC Application Process

Process	Material (Dilution)	Number of Coats	Time Interval Between Process	Consumption (±15%)	Tools
<b>1 Surface Preparation</b>	Surface needs to be dry and free from dirt, oil, and foreign matter. Surface unevenness, including cracks, will need to be treated with cement filler.				
<b>2 Primer</b>	SGC - Sand Primer (Dilution: Max 3% with water)	2	4 hrs	7 - 9 m <sup>2</sup> /l/coat	Spray Gun, Roller or Brush
<b>3 Texture Coat</b>	SGC Texture Coat (Dilution: Ready to use)	1 - 2	24 hrs	0.9 - 1.3 kg/m <sup>2</sup>	Spray Gun
<b>4 Top Coat</b>	SGC Topcoat Satin (Dilution: Max 2% with water)	1	-	8 - 9 m <sup>2</sup> /l	Spray Gun, Roller or Brush



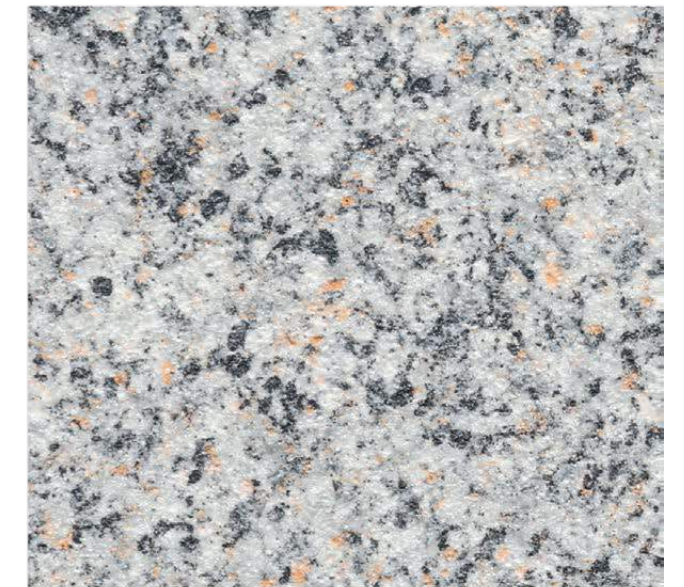
SGC-G-701



SGC-G-702



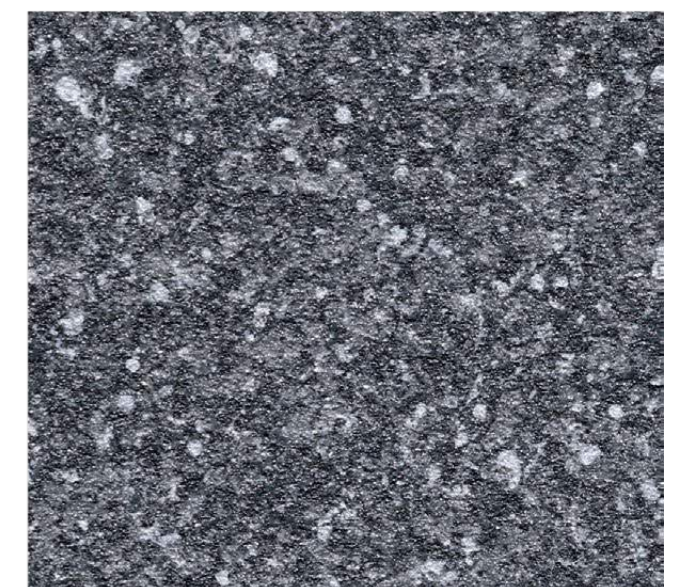
SGC-G-703



SGC-G-704

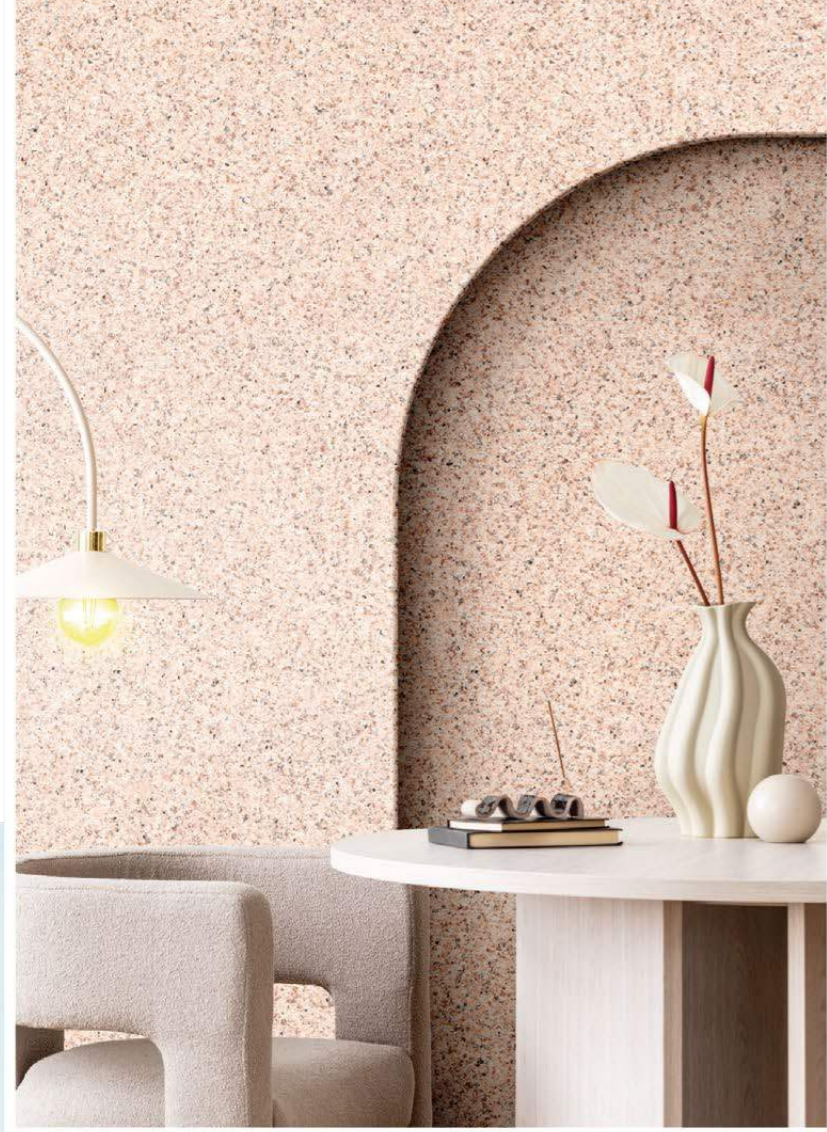


SGC-G-705



SGC-G-706

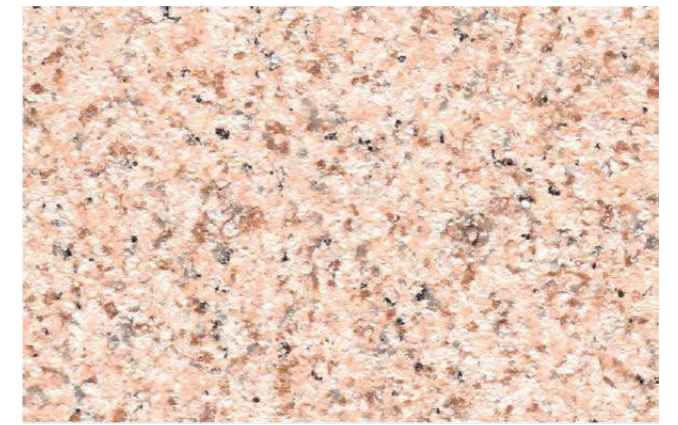
# G Type



# S Type



SGC-S-501



SGC-S-502



SGC-S-503



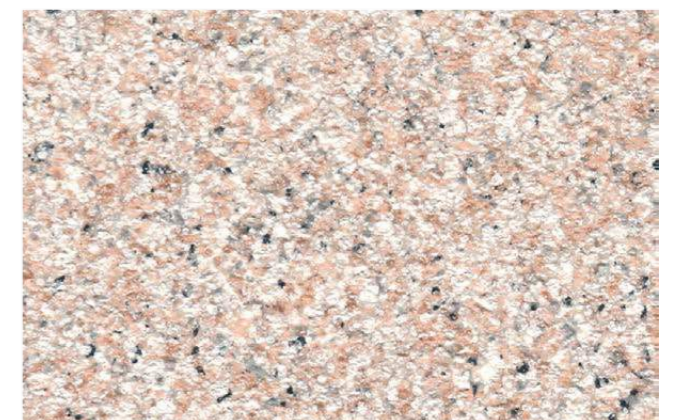
SGC-S-504



SGC-S-505



SGC-S-506



SGC-S-507



# SUZUKA® GRANITTO

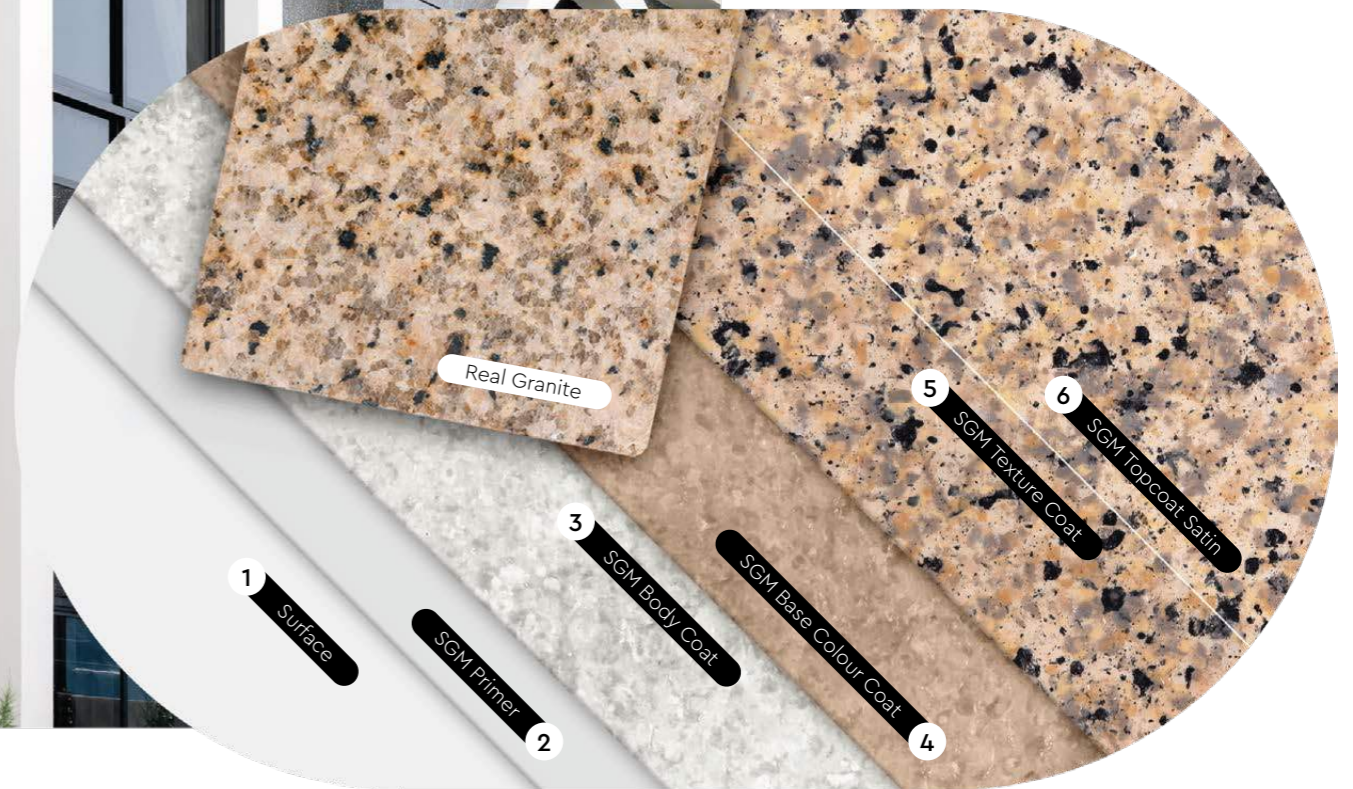
GRANITE EFFECT COATING

SGM uses high-performance and environmentally-friendly technology. Its water-based coating packages itself into individual capsules, allowing each to contain its own unique formula and colour.

This creates a one-time multi-colour spray system that is not only durable, but also effective in mirroring the authentic granite texture.



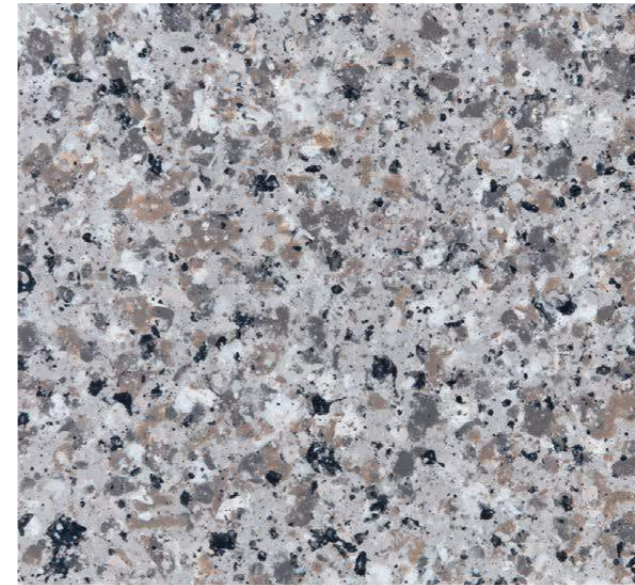
## SGM Coating System



### SGM Application Process

Process	Material (Mixing Weight Ratio)	Number of Coats	Time Interval Between Process	Consumption (±15%)	Tools
<b>1 Surface Preparation</b>	Surface needs to be dry and free from dirt, oil, and foreign matter. Surface unevenness, including cracks, will need to be treated with cement filler.				
<b>2 Primer</b>	EM Primer : Water 100 : 0 - 5	1	4 hrs	7 - 9 m <sup>2</sup> /l	Spray Gun, Roller or Brush
<b>3 Texture Coating</b>	SGM Body Coat : Water 100 : 0 - 5	1	24 hrs	3 - 3.5 kg/m <sup>2</sup>	Spray Gun
	SGM Base Color : Water 100 : 0 - 2	2	4 hrs	6 - 7 m <sup>2</sup> /l	Spray Gun, Roller or Brush
	SGM Texture Coat	1 - 2	24 hrs	0.5 - 0.8 kg/m <sup>2</sup>	Spray Gun
<b>4 Top Coat</b>	SGM Topcoat Satin: Water 100 : 0 - 2	1	-	8 - 9 m <sup>2</sup> /l	Spray Gun, Roller or Brush

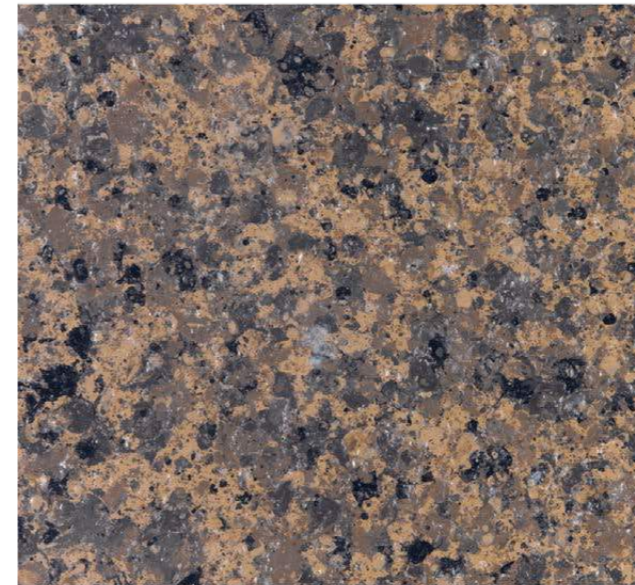
# G Type



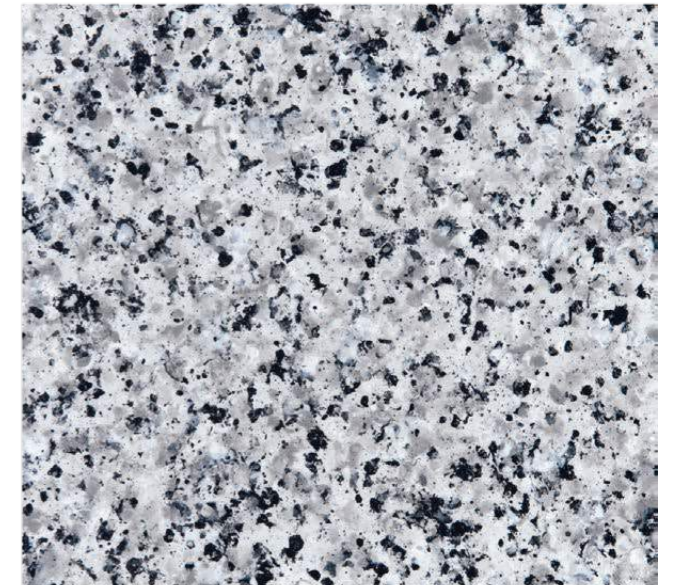
SGM-G-101



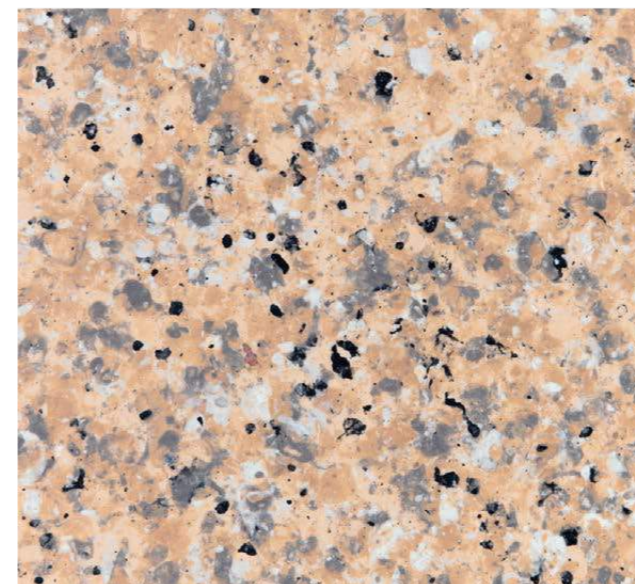
SGM-G-102



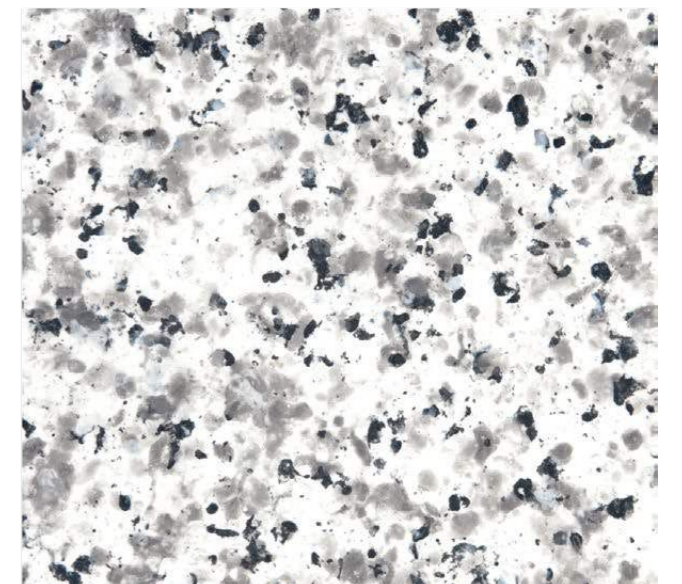
SGM-G-103



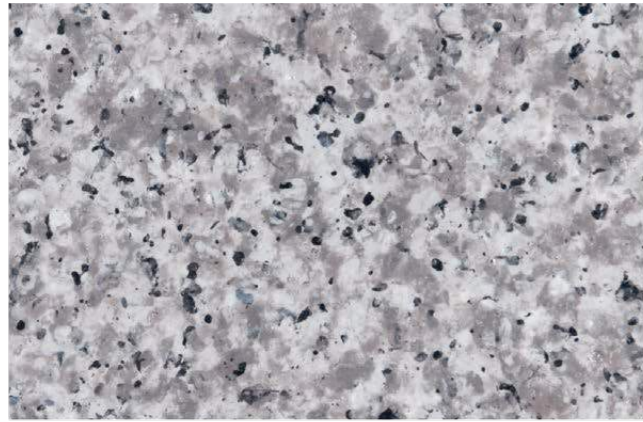
SGM-G-104



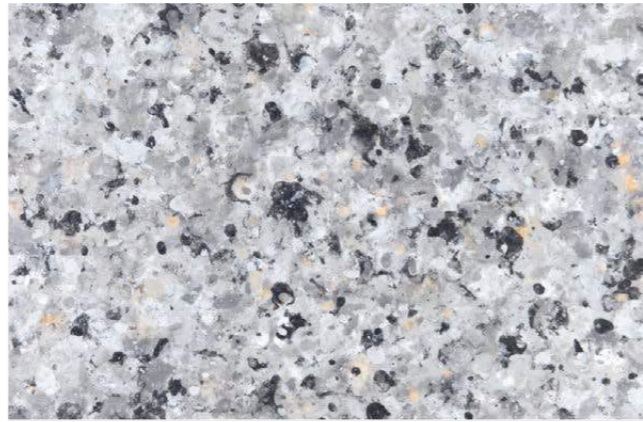
SGM-G-105



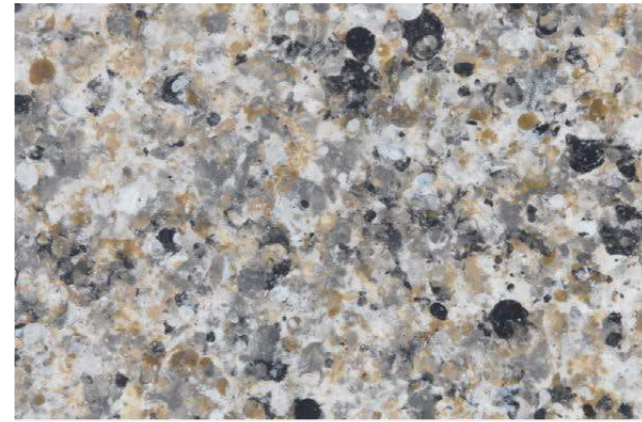
SGM-G-106



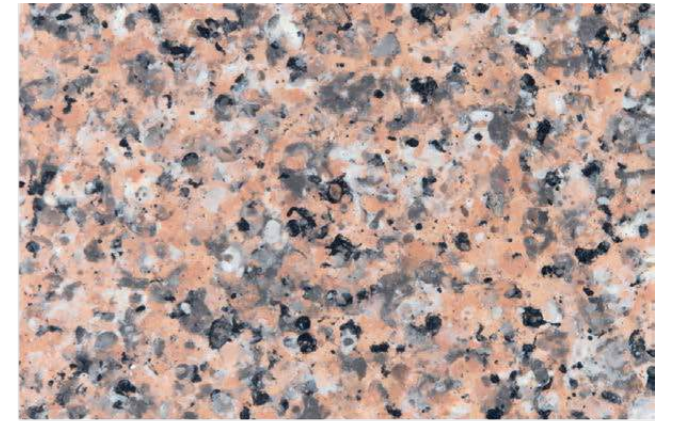
SGM-G-107



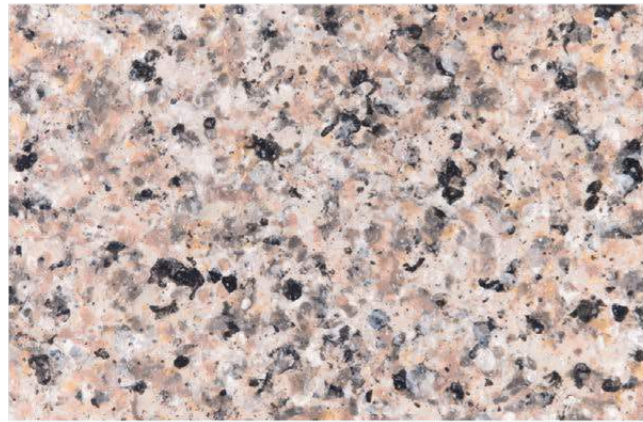
SGM-G-108



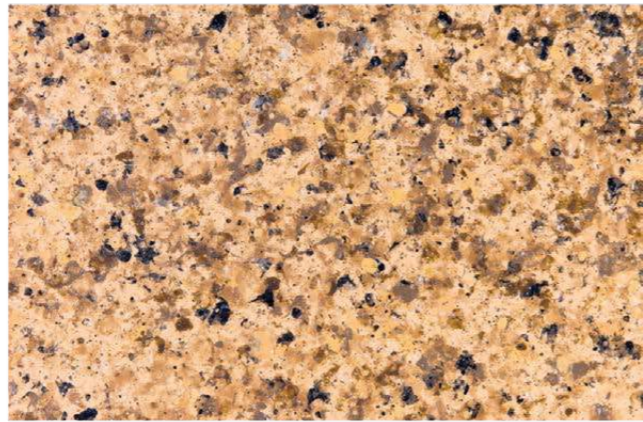
SGM-G-115



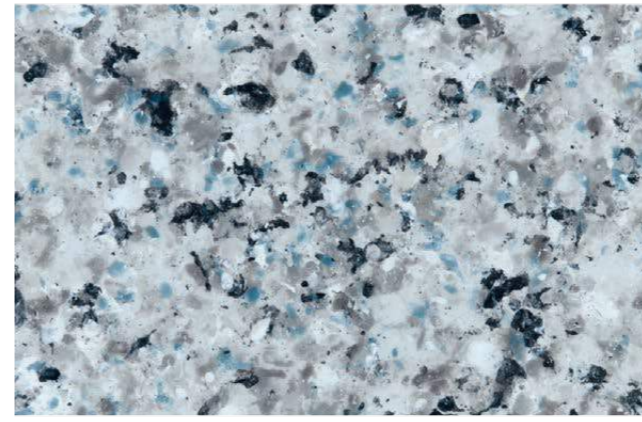
SGM-G-116



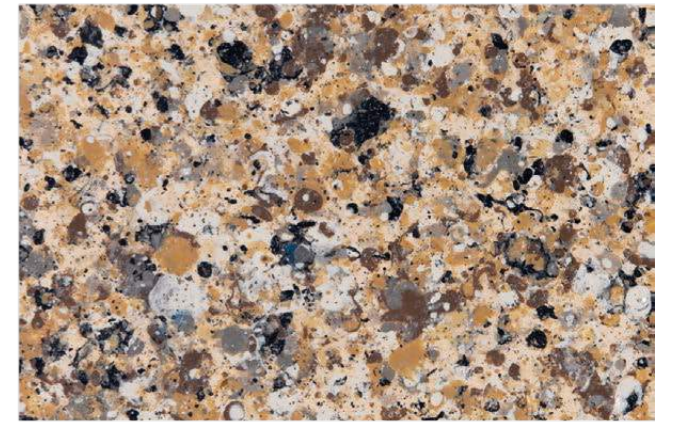
SGM-G-109



SGM-G-110



SGM-G-117



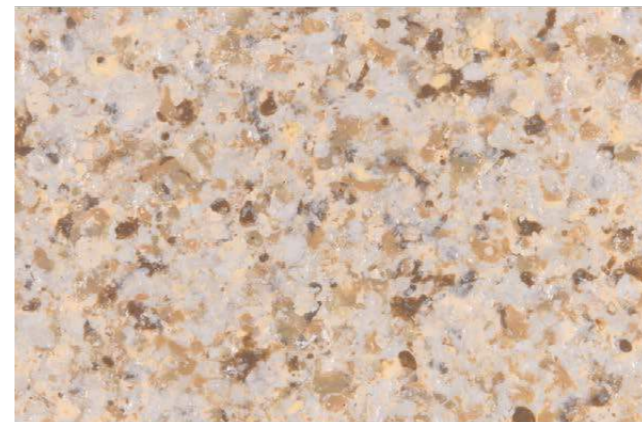
SGM-G-118



SGM-G-111



SGM-G-112



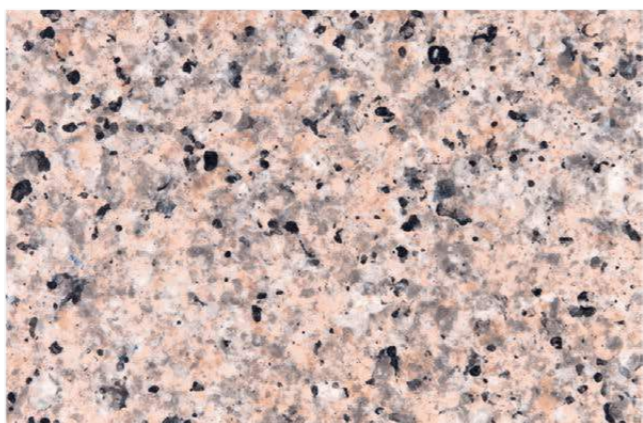
SGM-G-119



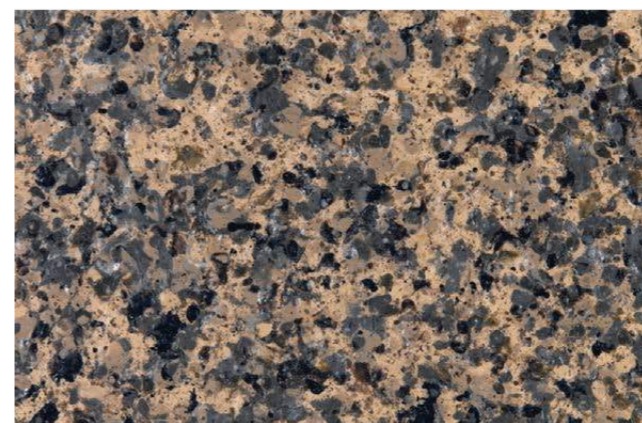
SGM-G-120



SGM-G-113



SGM-G-114

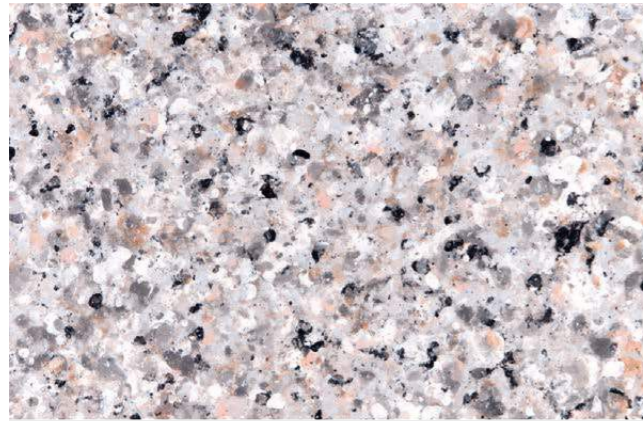


SGM-G-121

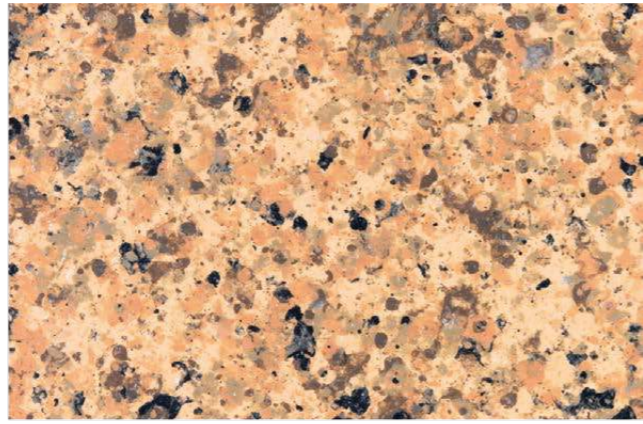


SGM-G-122

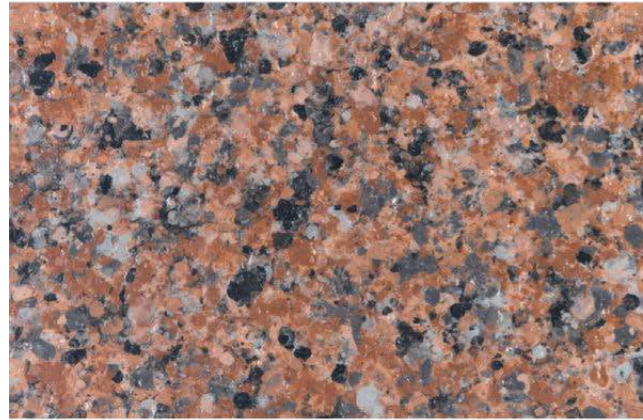




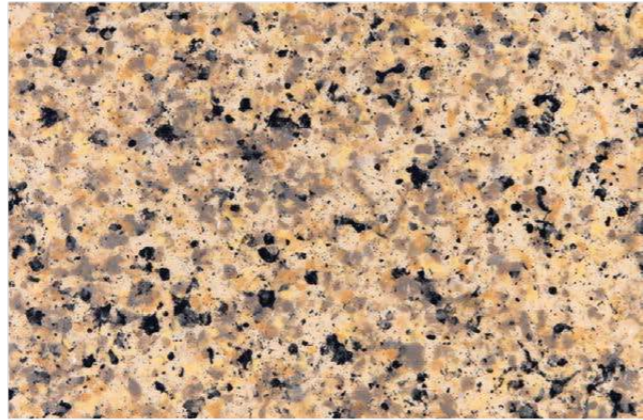
SGM-G-123



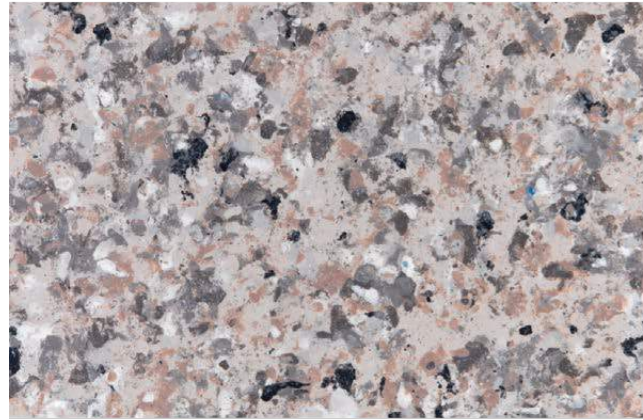
SGM-G-124



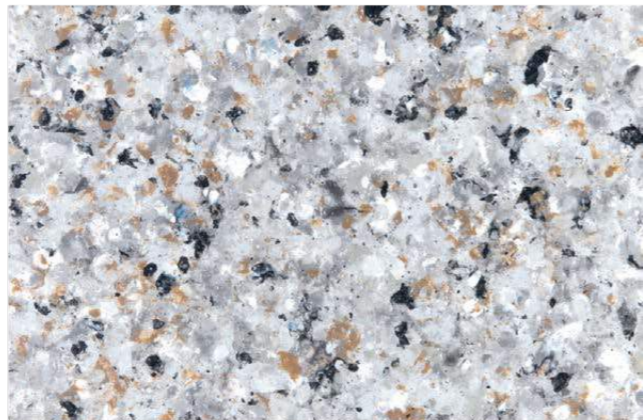
SGM-G-125



SGM-G-126



SGM-G-127



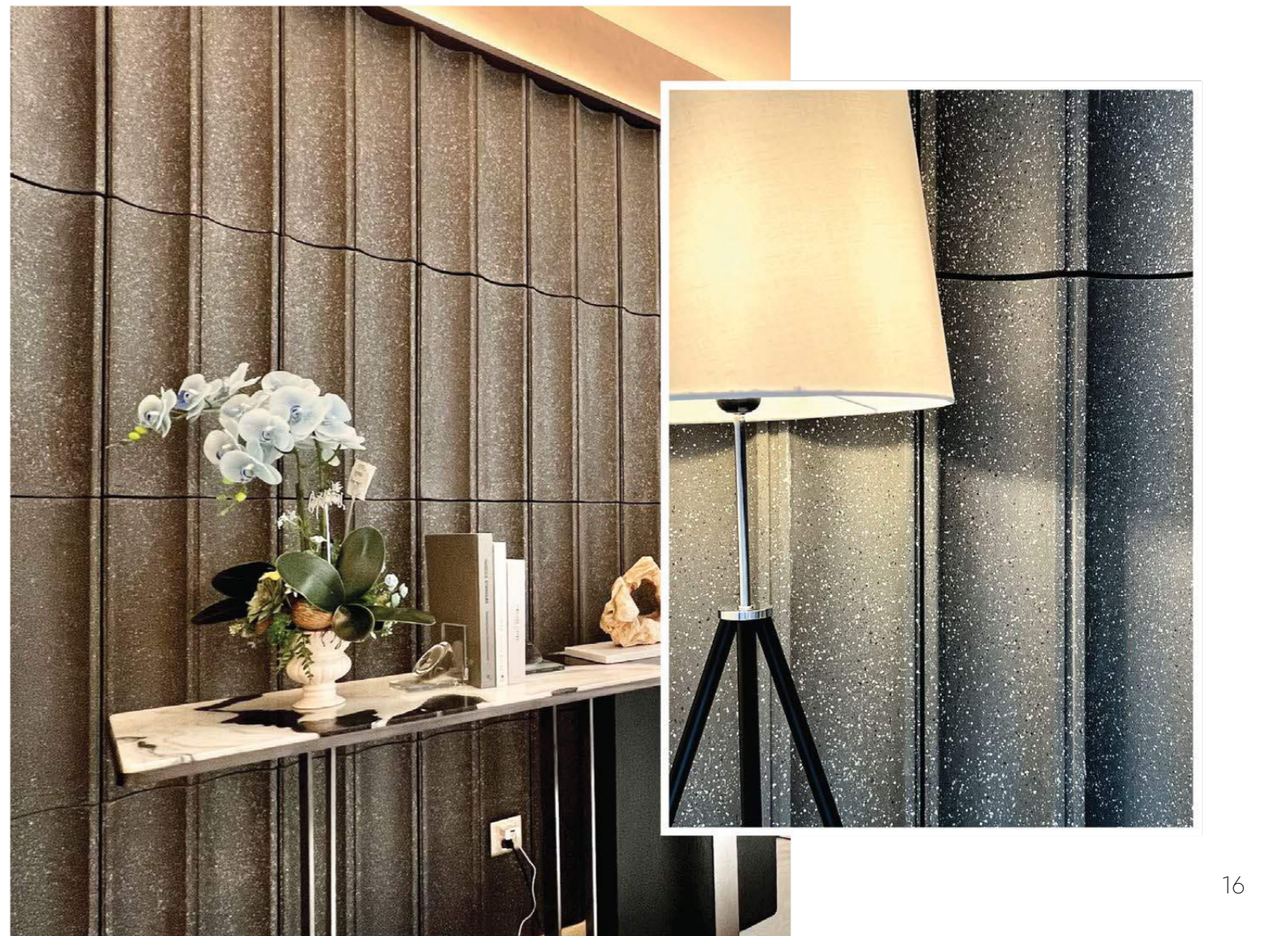
SGM-G-128

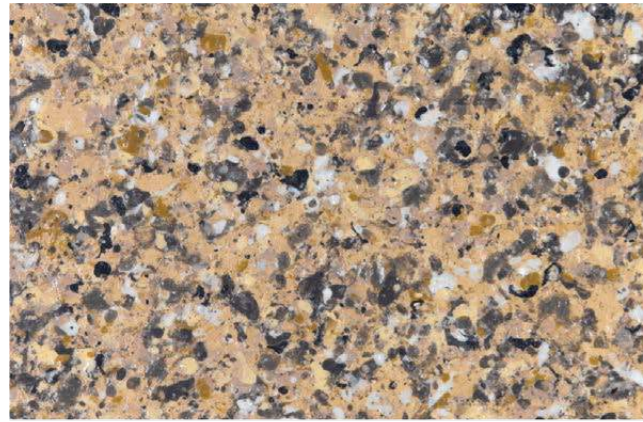


SGM-G-129

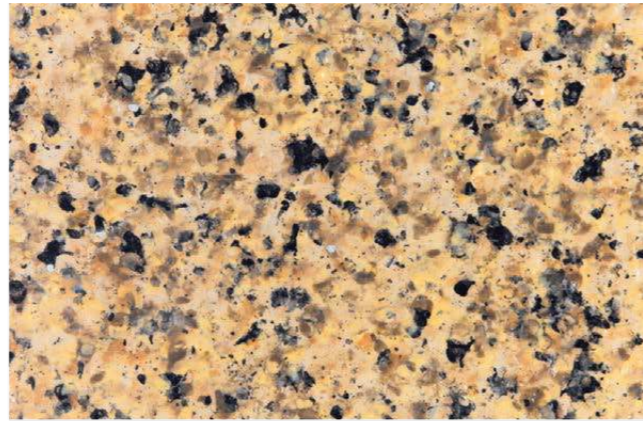


SGM-G-130





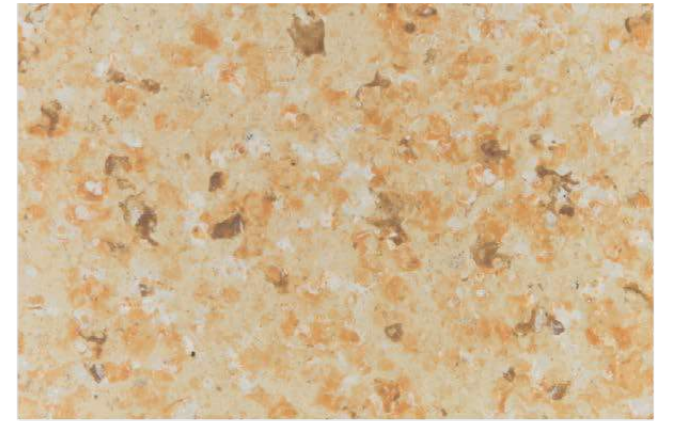
SGM-G-131



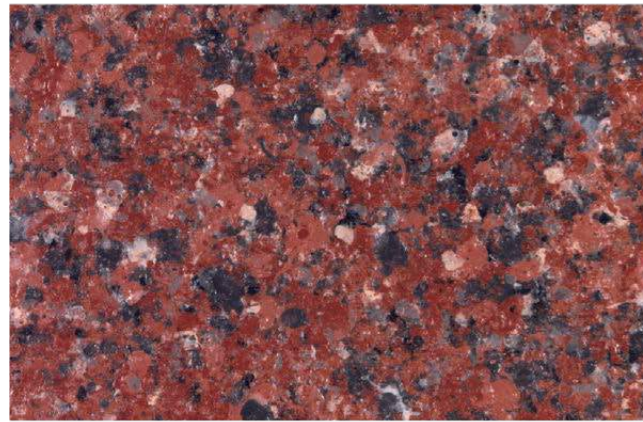
SGM-G-132



SGM-G-139



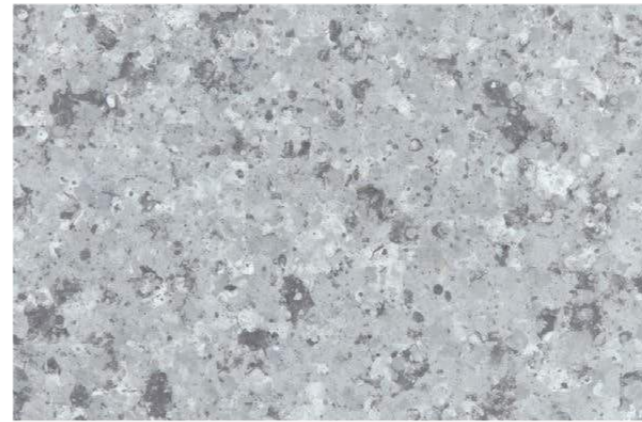
SGM-G-140



SGM-G-133



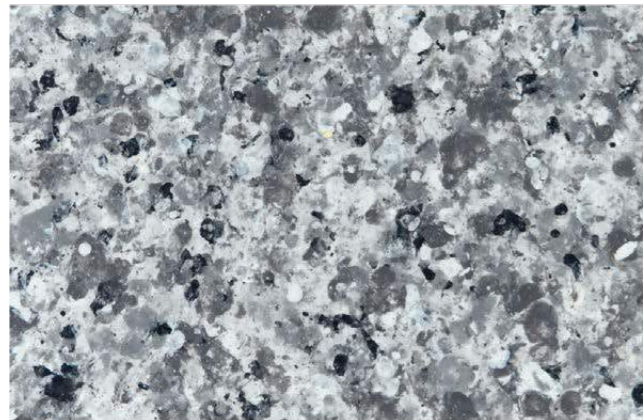
SGM-G-134



SGM-G-141



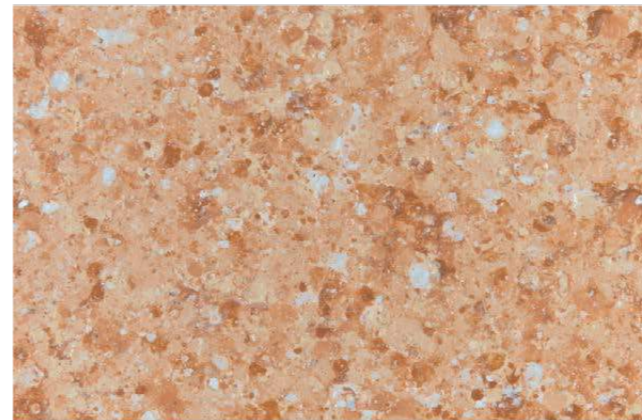
SGM-G-142



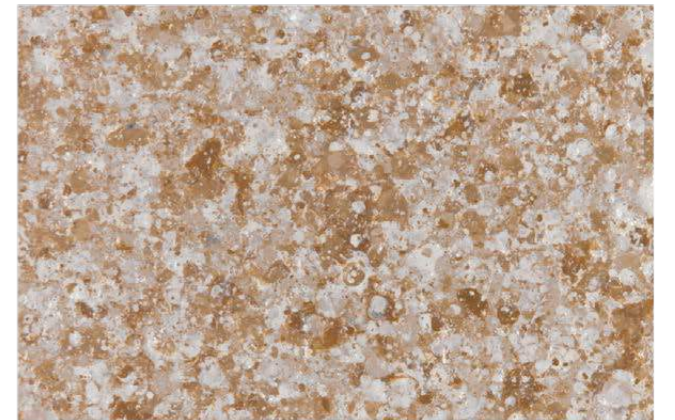
SGM-G-135



SGM-G-136



SGM-G-143



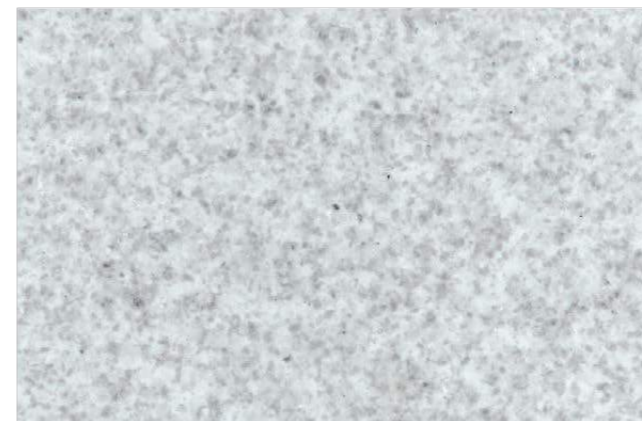
SGM-G-144



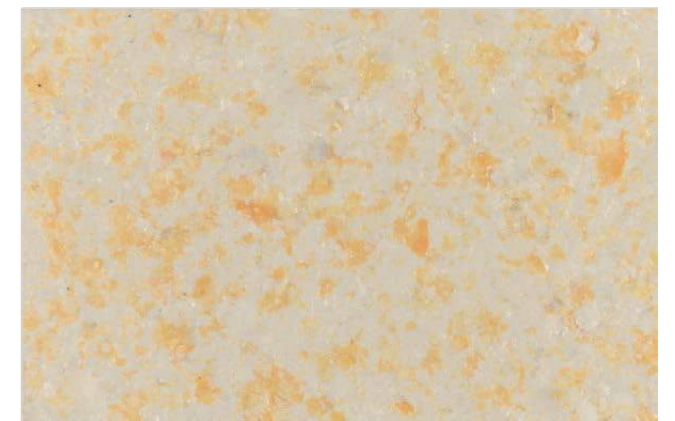
SGM-G-137



SGM-G-138



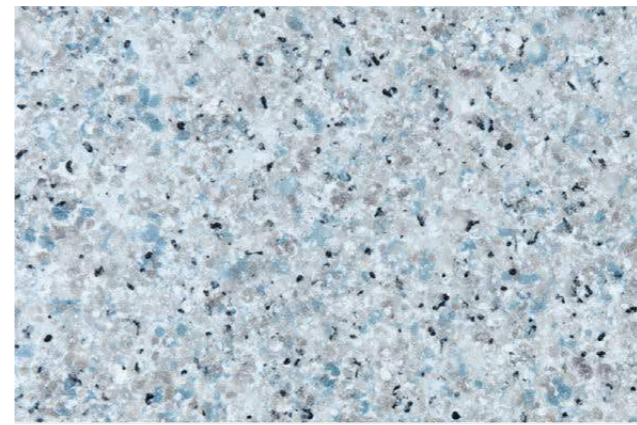
SGM-G-145



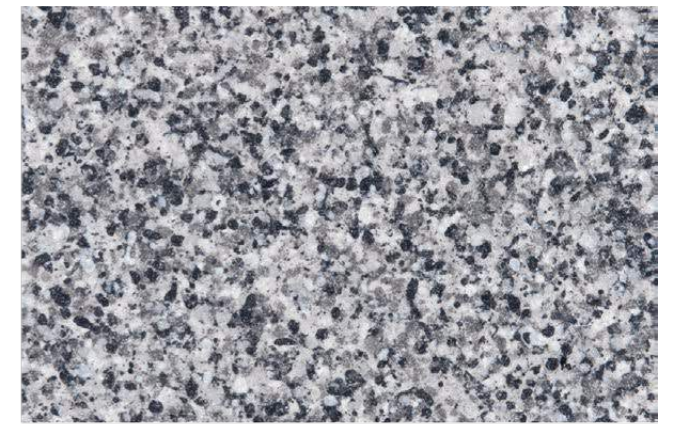
SGM-G-146



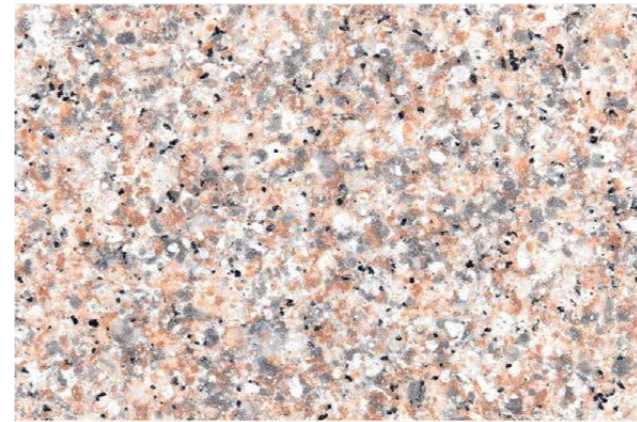
# S Type



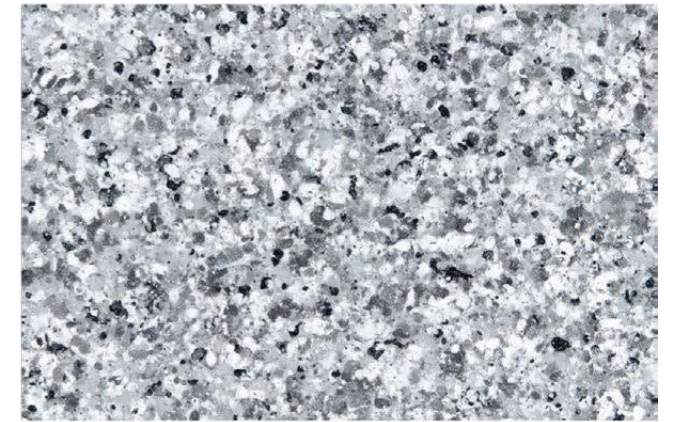
SGM-S-303



SGM-S-304



SGM-S-305



SGM-S-306



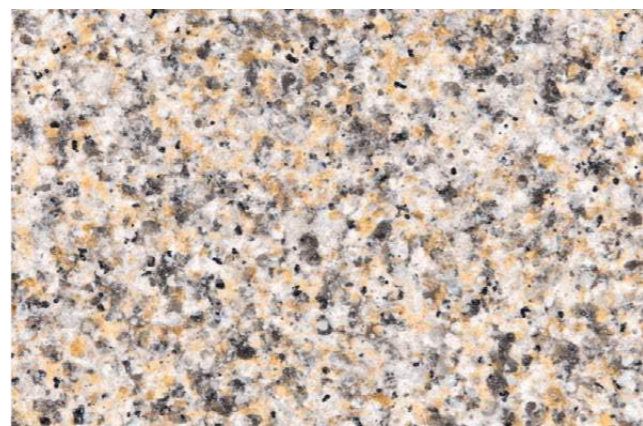
SGM-S-307



SGM-S-308



SGM-S-301



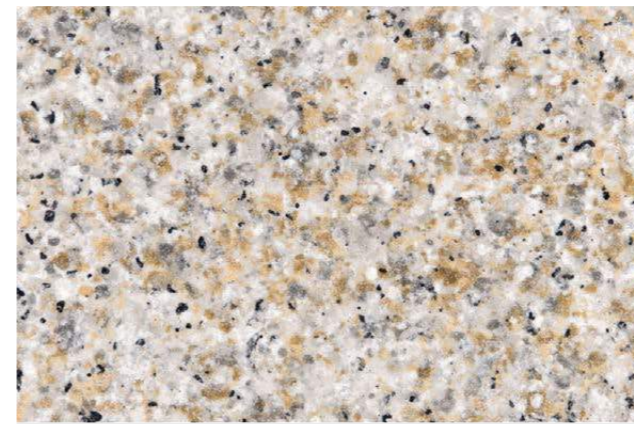
SGM-S-302



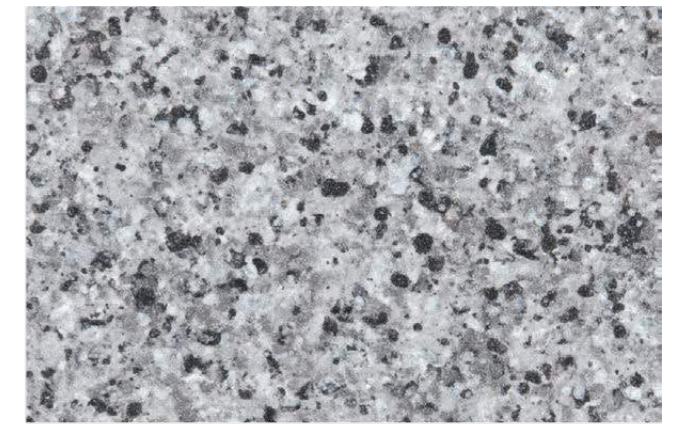
SGM-S-309



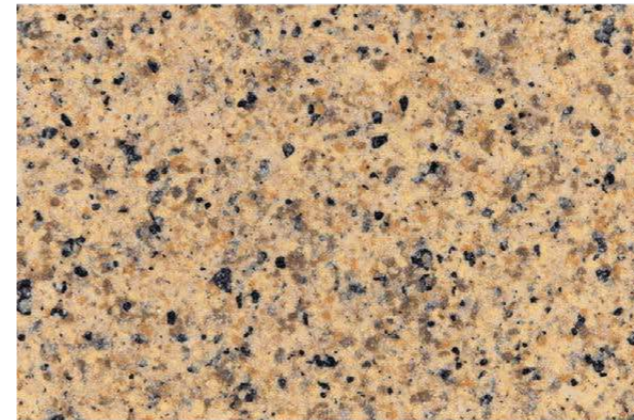
SGM-S-310



SGM-S-311



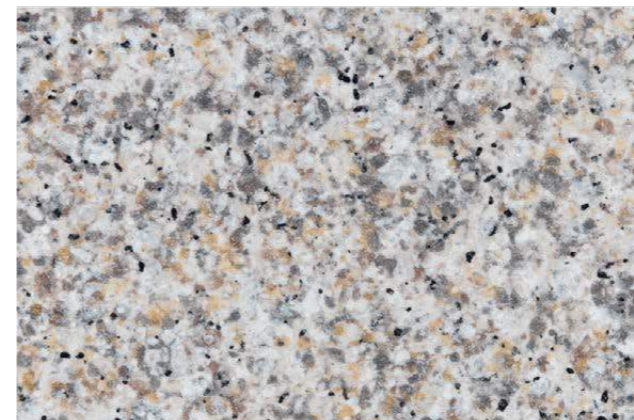
SGM-S-312



SGM-S-313



SGM-S-314



SGM-S-315



SGM-S-316



SGM-S-317



SGM-S-318

