

# JUMBO SPRAY TILE



TAIWAN • MALAYSIA • THAILAND

SUZUKA TEXTURE COATING

## SUZUKACOAT (M) SDN BHD

Lot 6492, Jln Haji Abdul Manan, Off Jalan Meru, 41050, Klang,  
Selangor Darul Ehsan, Malaysia.

T +603-3291 0722  
F +603-3290 3463  
W [www.suzuka.com.my](http://www.suzuka.com.my)



# JUMBO SPRAY TILE

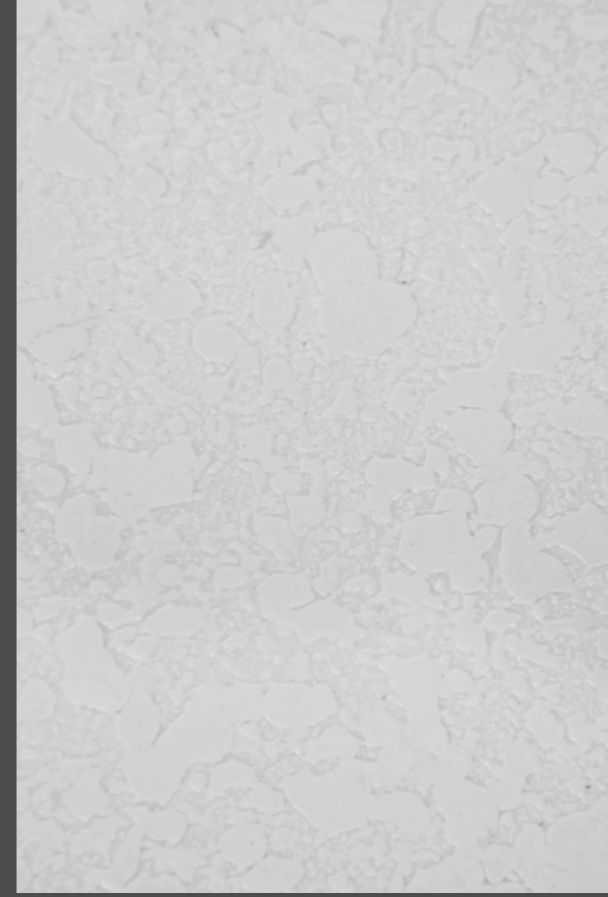


## SPECIFICATION & METHOD STATEMENT

OUTLINE OF APPLICATION

Process	Material	Mixing (Weight Ratio)	Number Of Coat	Interval Time To Proceed Next Process (Hrs)	Consumption	Tools Of Application	
1	Surface Preparation	Surface shall be dry and free from dirt, oil, grease and foreign matters. Surface unevenness, crack and pin hole shall be treated with cement filler.					
2	Under Coating	EM Sealer : Water	100 : 0-2	1	3	0.15 - 0.20ltr/m <sup>2</sup>	Roller or Brush
3	Texture Coating	Jumbo Tile : Water	100 : 0-5	1	24	1.0 -1.6kg/m <sup>2</sup>	Spray Gun
4	Top Coating	Acrylic Emulsion : Water	100 : 0-2	2	-	0.32 - 0.48ltr/m <sup>2</sup>	Roller or Brush

## JUMBO SPRAY TILE



JUMBO-HEAD CUT WITH PU COATING (L)



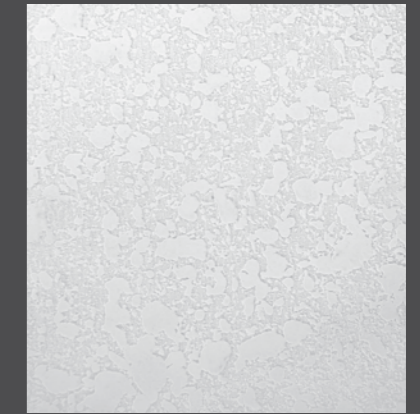
JUMBO-HEAD CUT (L)



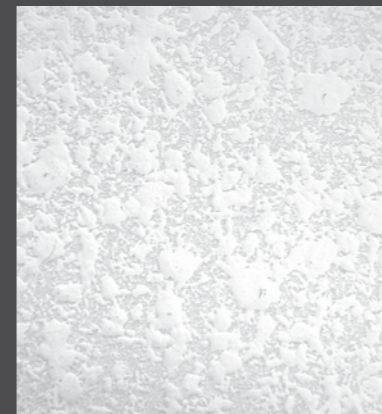
JUMBO-HEAD CUT (L)



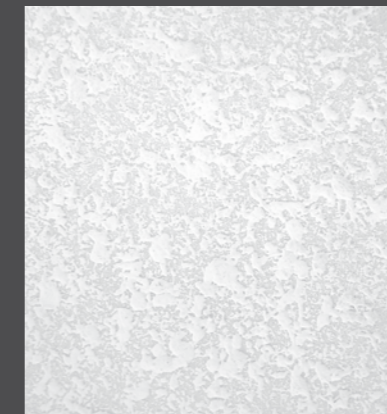
JUMBO-HEAD CUT (M)



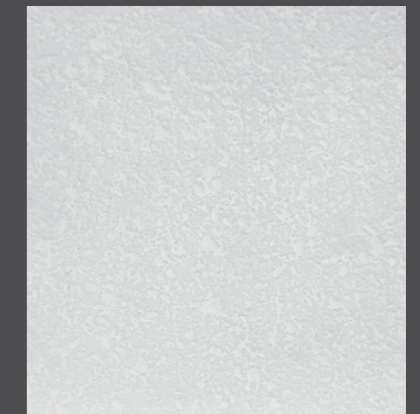
JUMBO-HEAD CUT (S)



JUMBO-NORMAL (L)



JUMBO-NORMAL (M)



JUMBO-NORMAL (S)